

CITY OF MELROSE




LYNDE STREET TRAFFIC CALMING PILOT

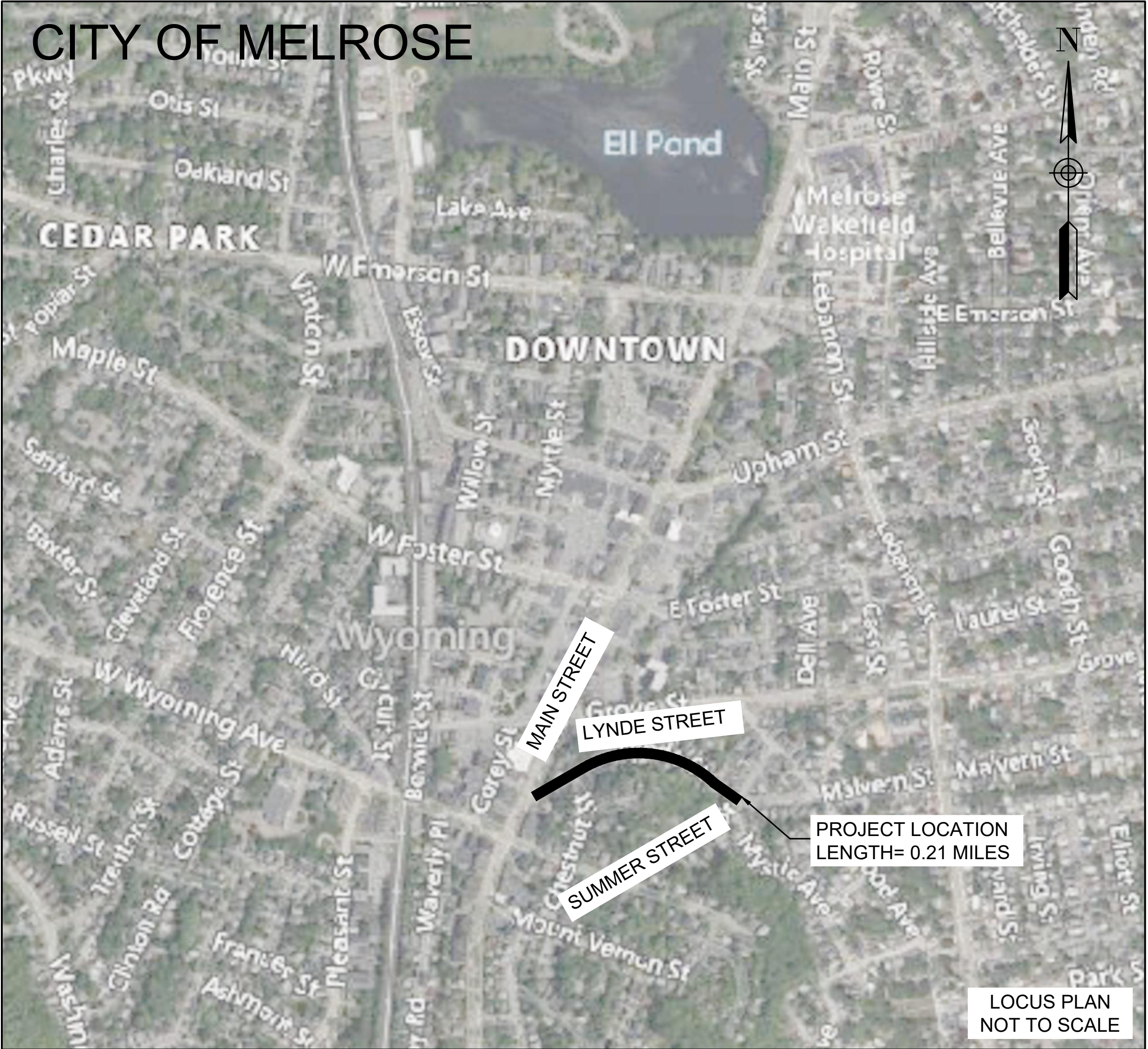
MAIN STREET TO SUMMER STREET

GENERAL NOTES

1. THE CONTRACTOR SHALL COMPLY WITH ALL APPLICABLE FEDERAL, STATE, AND LOCAL LAWS, RULES, REGULATIONS AND SAFETY CODES IN THE CONSTRUCTION OF ALL IMPROVEMENTS. SIGN AND STRIPING WORK SHALL ALSO MEET ALL APPLICABLE REQUIREMENTS OF THE MANUAL OF UNIFORM TRAFFIC CONTROL DEVICES (MUTCD).
2. BASE MAPPING WAS PREPARED FROM AUTOCAD GEOLOCATION AERIAL IMAGERY AND FIELD MEASUREMENTS.
3. THE CONTRACTOR SHALL VERIFY BASE MAPPING IN THE FIELD PRIOR TO PLACING STRIPING OR SYMBOLS AND REPORT ANY DISCREPANCIES TO THE ENGINEER PRIOR TO START OF WORK. WHEN THESE PLANS ARE IN CONFLICT WITH ACTUAL SITE CONDITIONS, THE CONTRACTOR SHALL CONTACT THE CITY AND ENGINEER. PROPOSED STRIPING MAY ONLY BE ADJUSTED AS DIRECTED BY THE ENGINEER.
4. DRIVEWAYS LOCATIONS SHOWN ARE APPROXIMATE AND NOT ALL DRIVEWAYS ARE SHOWN.
5. MARKED CROSSWALKS SHOWN ON THE DRAWINGS ARE APPROXIMATE AND NOT ALL CROSSWALKS ARE SHOWN.
6. ALL PAVEMENT MARKINGS ARE PAINT UNLESS OTHERWISE NOTED.
7. THE CONTRACTOR SHALL TAKE ADEQUATE PRECAUTIONS TO PROTECT ALL WALKS, GRADING, SIDEWALKS, AND FEATURES OUTSIDE OF THE LIMITS OF WORK AND SHALL REPAIR AND REPLACE OR OTHERWISE MAKE GOOD ANY SUCH OR OTHER DAMAGE CAUSED BY CONTRACTOR AT NO ADDITIONAL COST AS DIRECTED BY THE ENGINEER OR OWNER'S DESIGNATED REPRESENTATIVE.

QUANTITIES SUMMARY

ITEM	IMAGE	UNIT SIZE		UNIT	QUANTITY	NOTES	DETAILS
		W	H				
WHITE FLEXPOST	○	N/A	28"	EA	23	-	SEE CITY STANDARD DETAIL
W17-1		24"	24"	EA	10	LEGEND: BLACK BACKGROUND: YELLOW (RETROREFLECTIVE) 2" SIGN POLES REQUIRED: 7 MOUNT 3 SIGNS ON EX POLES	SEE MUTCD STANDARD DETAIL
W13-1		18"	18"	EA	2	LEGEND: BLACK BACKGROUND: YELLOW (RETROREFLECTIVE) MOUNT WITH W17-1	SEE MUTCD STANDARD DETAIL
SPEED CUSHION		6"	3"	EA	10	-	SEE TRAFFIC LOGIX STANDARD SPEED CUSHION DETAIL



INDEX

SHEET NO.	PLAN TITLE
1	TITLE SHEET, NOTES, QUANTITIES SUMMARY
2-4	PAVEMENT MARKING AND SIGNAGE

ALL WORK SHALL CONFORM TO THESE PLANS, AND THE MOST RECENT VERSIONS OF THE MANUAL ON UNIFORM TRAFFIC CONTROL DEVICES FOR STREETS AND HIGHWAYS. IN THE EVENT OF CONFLICTS OR DISCREPANCIES, THE ENGINEER SHALL BE CONTACTED FOR RESOLUTION.

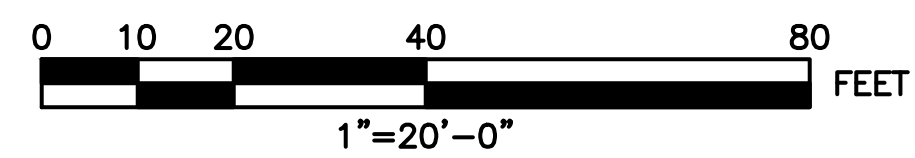
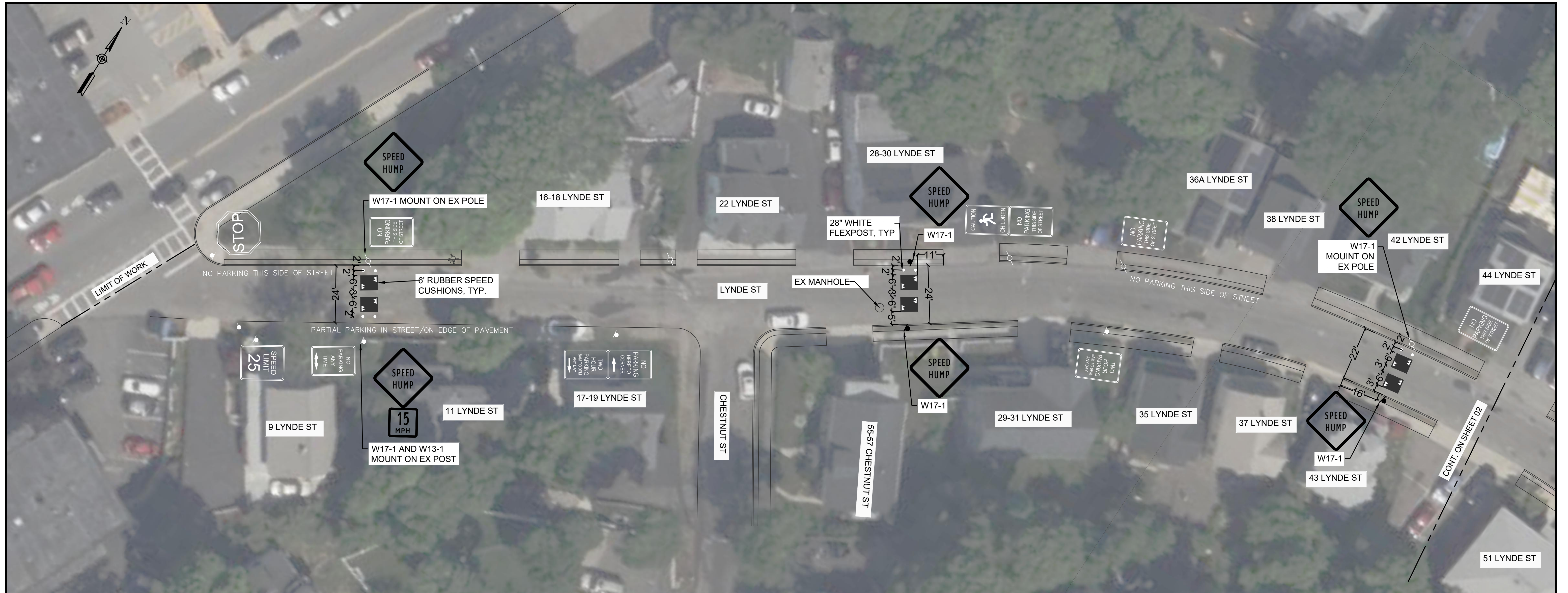
TRAFFIC CALMING PILOT

TITLE SHEET AND NOTES

LYNDE STREET
CITY OF MELROSE, MA



DESIGNED BY: JM
 PREPARED BY: JM
 CHECKED BY: MC
 DATE: 04/02/2024
 SHEET: 01 OF 04



SPEED CUSHION INSTALLATION NOTES

1. DO NOT INSTALL TEMPORARY CUSHIONS OVER ANY VALVES, MANHOLES, DRAINAGE STRUCTURES, WATER GATES, OR ANY OTHER STREET LEVEL UTILITY.
2. IF THERE ARE DISCREPANCIES IN THE FIELD FOR SPEED HUMP PLACEMENT DUE TO UTILITIES OR DRIVEWAYS, CONTACT THE ENGINEER.

LEGEND AND ABBREVIATIONS

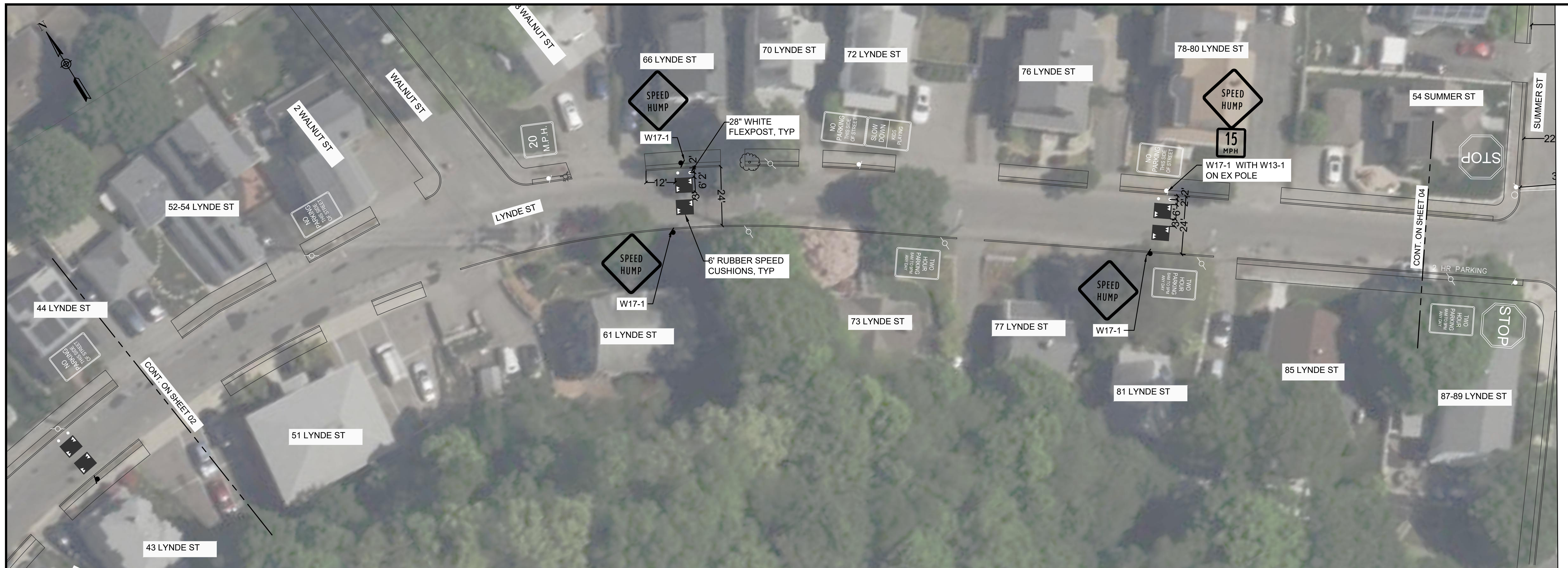
EXISTING	PROPOSED	EXISTING	PROPOSED	
	CONT EX EQ MNT O.C. R REM TYP		SWEL	4" SOLID WHITE EDGE LINE
	EQU		SL	12" MINIMUM WHITE STOP LINE (UNLESS OTHERWISE NOTED)
	MNT ON CENTER SPACING		CW	WHITE CROSSWALK LINES, 12" WIDE 4' O.C. AND 12" WHITE TRANSVERSE CROSSWALK LINES 10' WIDE TYP
	RADIUS		SWCHL	8" SOLID WHITE CHANNELIZATION LINE (SWCHL) 10' O.C. AT 45° UNLESS OTHERWISE NOTED
	REMAINING TYPICAL		SYCHL	8" SOLID YELLOW CHANNELIZATION LINE (SYCHL) 10' O.C. AT 45° UNLESS OTHERWISE NOTED
	NEW OR RELOCATED SIGN			
	SIGN POST			
	HYDRANT			
	UTILITY POLE			
	FLEXPOST (YELLOW OR WHITE)			
	TEMPORARY RUBBER SPEED HUMP			
	LIMIT OF PAVEMENT MARKINGS			
	MATCHLINE			

TRAFFIC CALMING PILOT

**PAVEMENT MARKING AND SIGNAGE
LYNDE STREET
CITY OF MELROSE, MA**

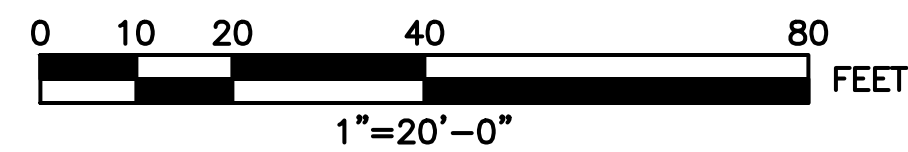
DESIGNED BY: JM
 PREPARED BY: JM
 CHECKED BY: MC
 DATE: 04/02/2024
 SHEET: 02 OF 04





SPEED CUSHION INSTALLATION NOTES

1. DO NOT INSTALL TEMPORARY CUSHIONS OVER ANY VALVES, MANHOLES, DRAINAGE STRUCTURES, WATER GATES, OR ANY OTHER STREET LEVEL UTILITY.
2. IF THERE ARE DISCREPANCIES IN THE FIELD FOR SPEED HUMP PLACEMENT DUE TO UTILITIES OR DRIVEWAYS, CONTACT THE ENGINEER.

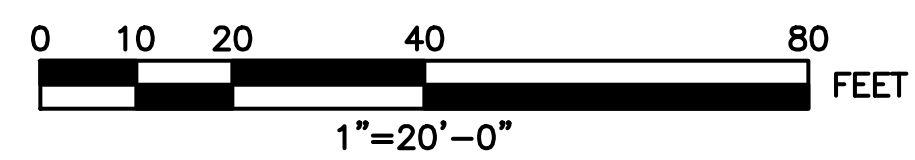
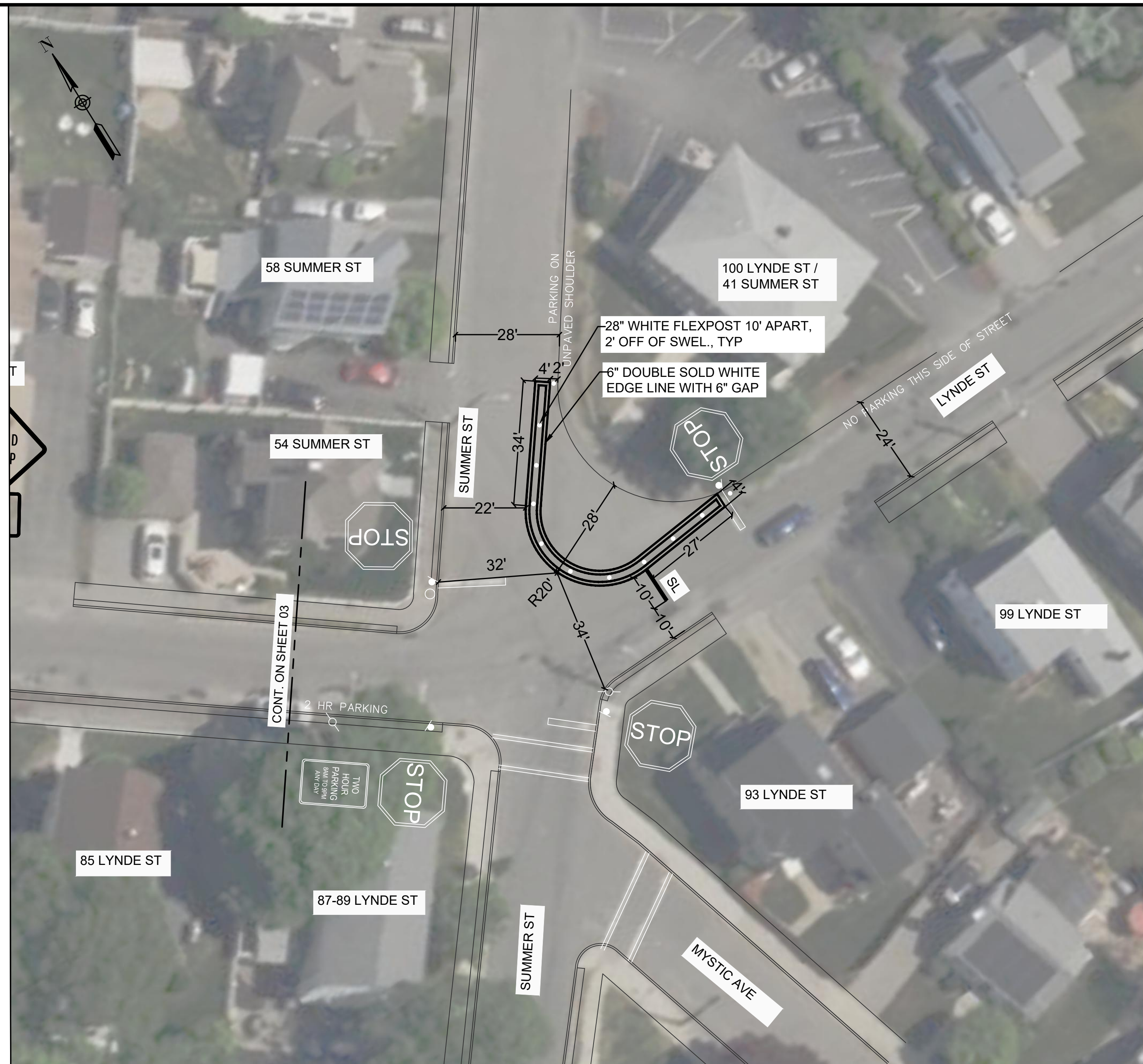


TRAFFIC CALMING PILOT

**PAVEMENT MARKING AND SIGNAGE
LYNDE STREET
CITY OF MELROSE, MA**



DESIGNED BY:	JM	DATE:	04/02/2024
PREPARED BY:	JM	SHEET:	03 OF 04
CHECKED BY:	MC		



SPEED CUSHION INSTALLATION NOTES

1. DO NOT INSTALL TEMPORARY CUSHIONS OVER ANY VALVES, MANHOLES, DRAINAGE STRUCTURES, WATER GATES, OR ANY OTHER STREET LEVEL UTILITY.
2. IF THERE ARE DISCREPANCIES IN THE FIELD FOR SPEED HUMP PLACEMENT DUE TO UTILITIES OR DRIVEWAYS, CONTACT THE ENGINEER.

TRAFFIC CALMING PILOT

**PAVEMENT MARKING AND SIGNAGE
LYNDE STREET
CITY OF MELROSE, MA**



DESIGNED BY:	JM	DATE:	04/02/2024
PREPARED BY:	JM	SHEET:	04 OF 04
CHECKED BY:	MC		