

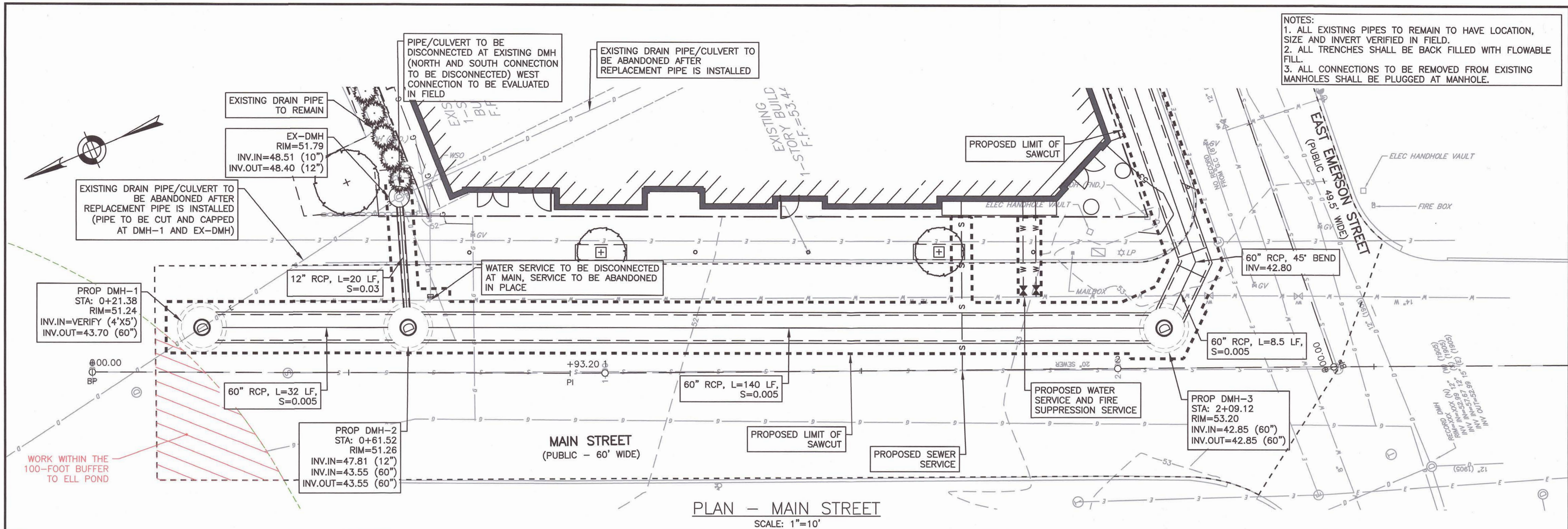


HOWARD STEIN HUDSON
 114 Turnpike Road, Suite 2C
 Chelmsford, MA 01824
 www.hshassoc.com

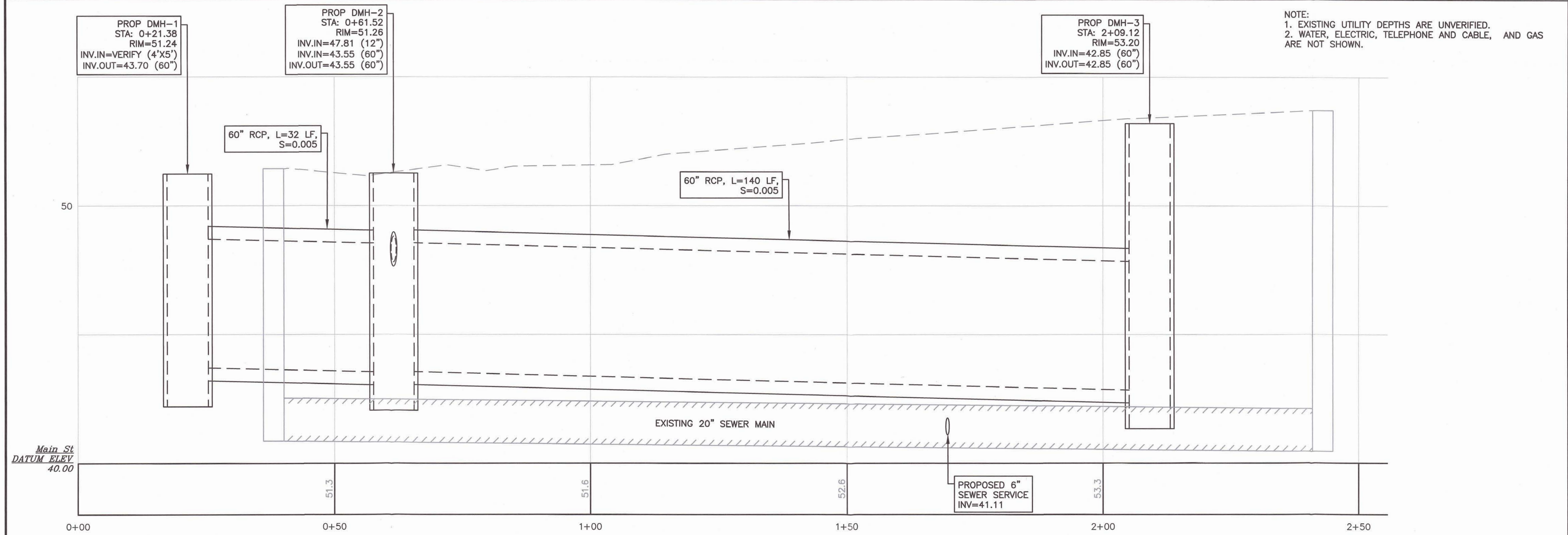
PREPARED FOR:
 CITY OF MELROSE
 562 MAIN STREET
 MELROSE, MA
 02176

**CULVERT RELOCATION
 MAIN ST & EAST EMERSON ST
 MELROSE, MA, 02176**

- NOTES:
1. ALL EXISTING PIPES TO REMAIN TO HAVE LOCATION, SIZE AND INVERT VERIFIED IN FIELD.
 2. ALL TRENCHES SHALL BE BACK FILLED WITH FLOWABLE FILL.
 3. ALL CONNECTIONS TO BE REMOVED FROM EXISTING MANHOLES SHALL BE PLUGGED AT MANHOLE.



- NOTE:
1. EXISTING UTILITY DEPTHS ARE UNVERIFIED.
 2. WATER, ELECTRIC, TELEPHONE AND CABLE, AND GAS ARE NOT SHOWN.

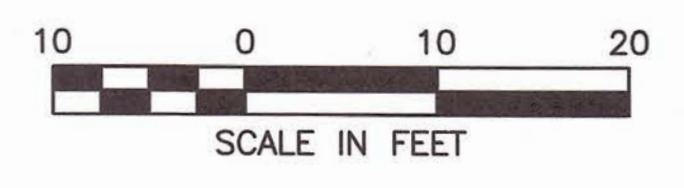


REVISIONS:

| NO | BY | DATE | DESCRIPTION |
|----|----|------|-------------|
| | | | |
| | | | |
| | | | |
| | | | |
| | | | |
| | | | |
| | | | |
| | | | |
| | | | |
| | | | |

**PLAN AND
 PROFILE -
 MAIN STREET**

| | |
|-----------------|-----------|
| DATE: | 5/31/2022 |
| PROJECT NUMBER: | 20161.01 |
| DESIGNED BY: | KNL |
| DRAWN BY: | KNL |
| CHECKED BY: | KE |



4/27/2023 L:\0161\CURRENT\CUTSHEET\20161 MainSt.dwg George Mihor