



HOWARD STEIN HUDSON
 114 Turnpike Road, Suite 2C
 Chelmsford, MA 01824
 www.hshassoc.com

PREPARED FOR:
 CITY OF MELROSE
 562 MAIN STREET
 MELROSE, MA
 02176

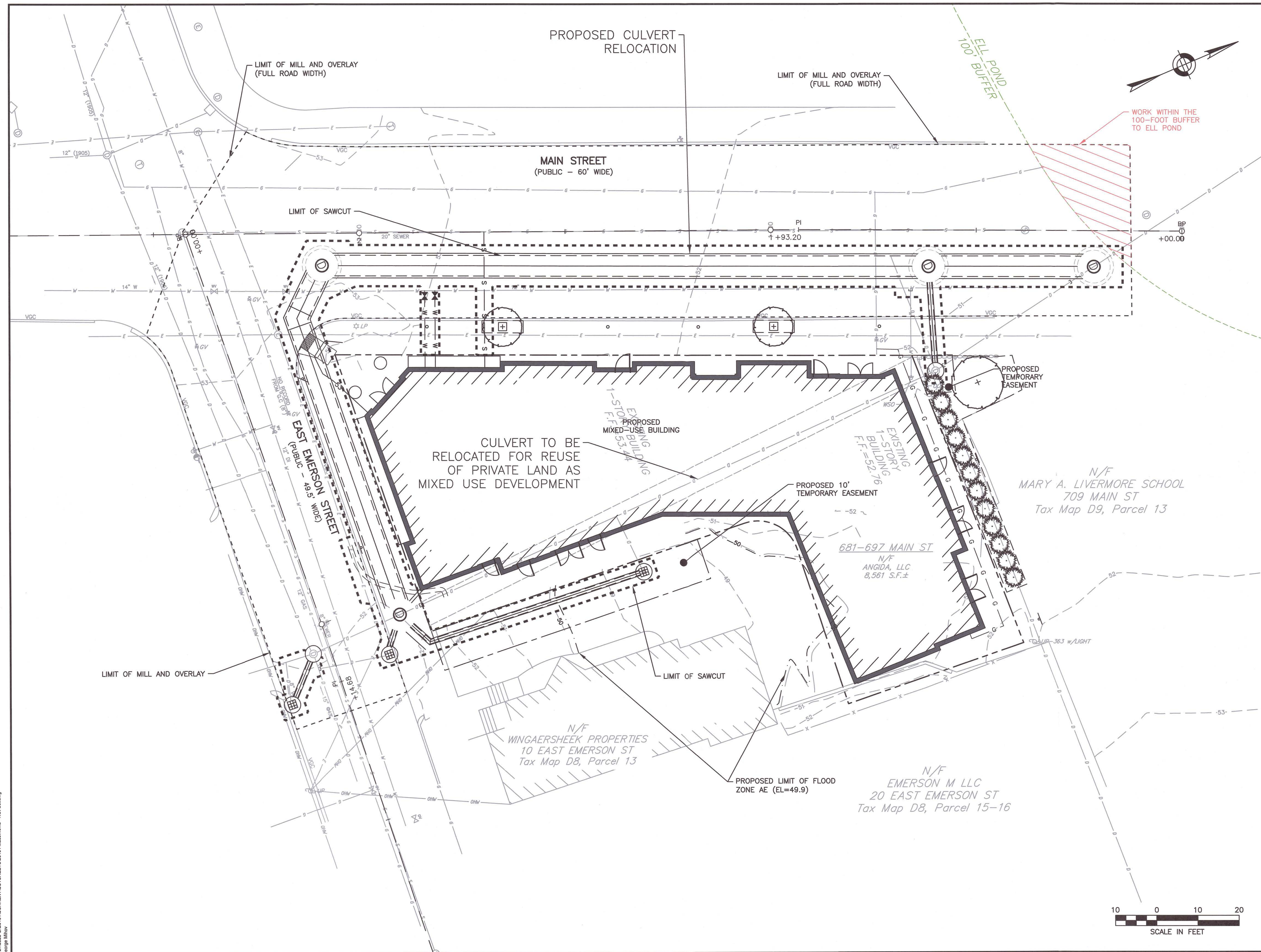
CULVERT RELOCATION
MAIN ST & EAST EMERSON ST
MELROSE, MA, 02176

REVISIONS:

NO	BY	DATE	DESCRIPTION

PROJECT OVERVIEW

DATE: 5/31/2022
 PROJECT NUMBER: 20161.01
 DESIGNED BY: KNL
 DRAWN BY: KNL
 CHECKED BY: KE



4/27/2023 L:\2016\CURRENT\PROJECTS\20161 MainStWorks - NO Set.dwg
 George Mihay