

EXISTING VINYL FENCE TO BE MATCHED



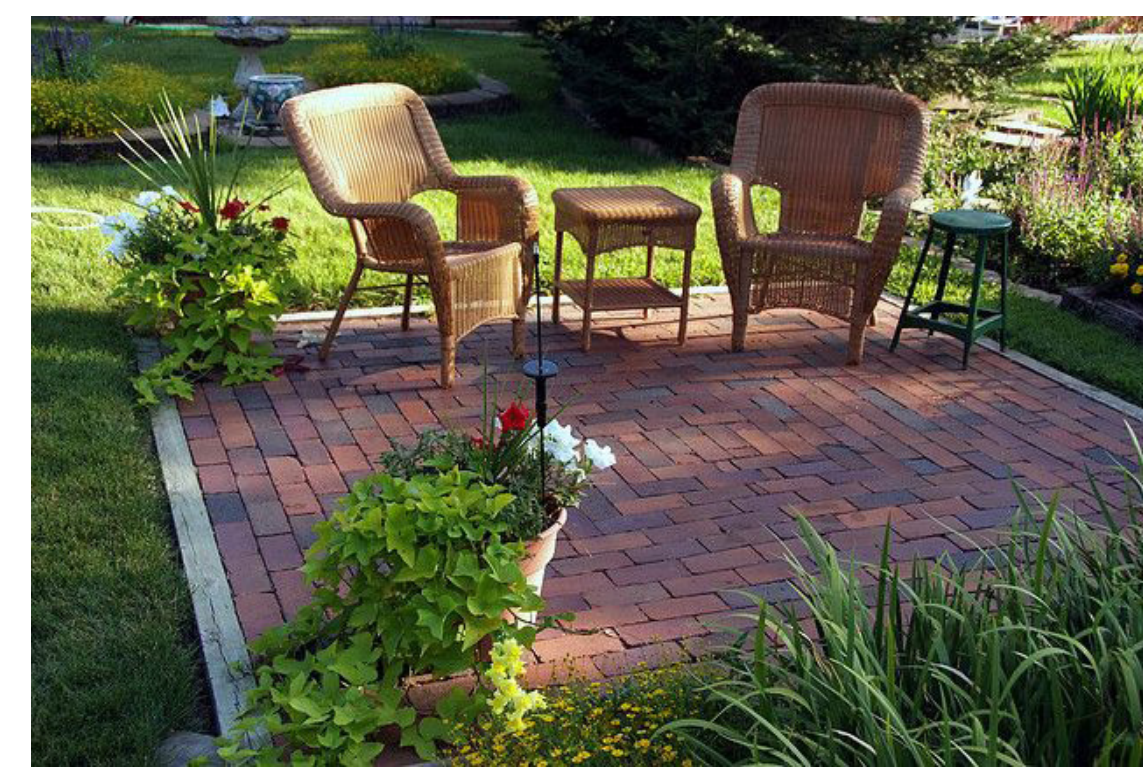
EXISTING STONE WALL AT FRONT OF PROPERTY TO REMAIN



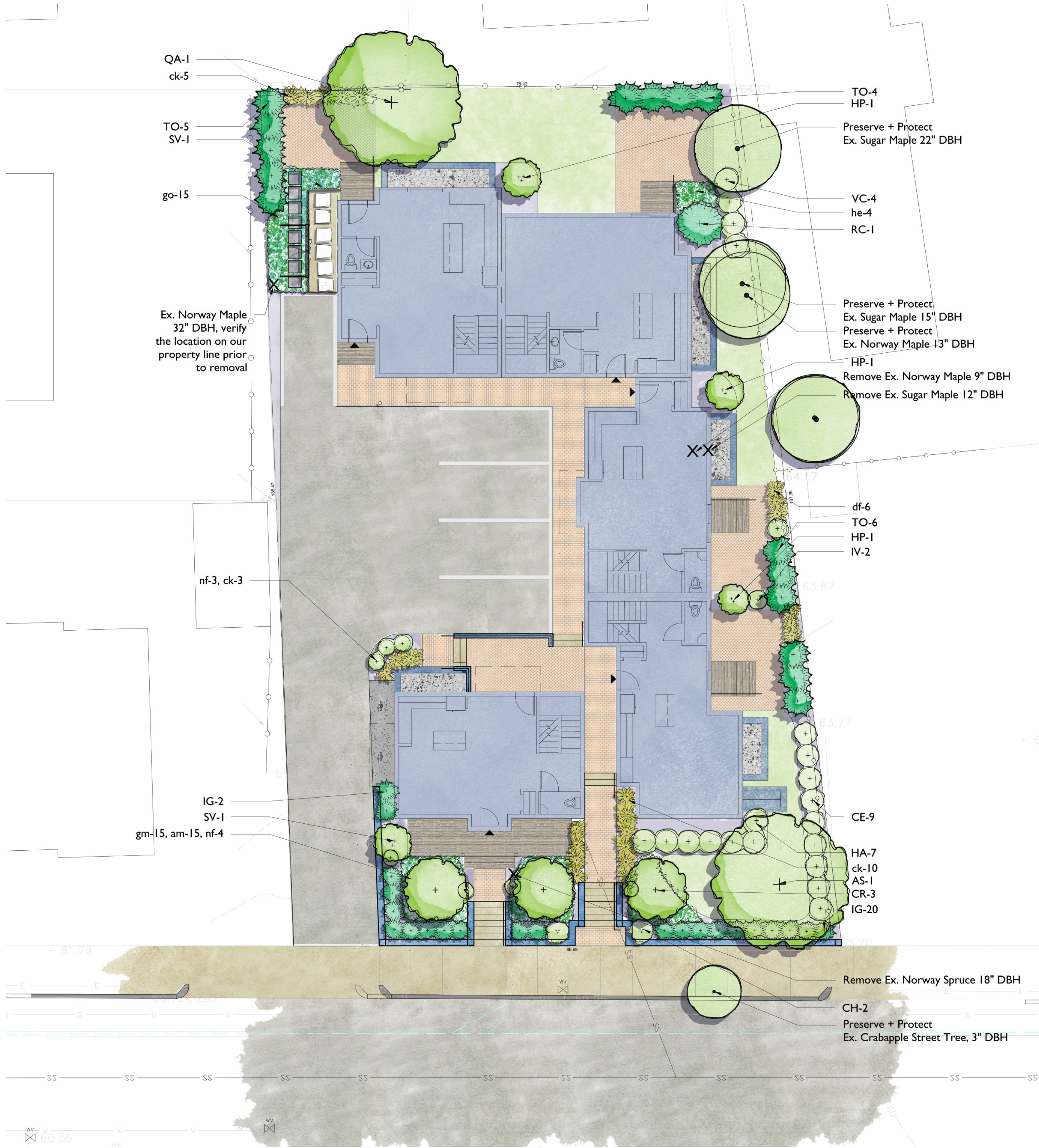
ABUTTERS FENCE TO REMAIN



ABUTTERS FENCE TO REMAIN



PRIVATE BRICK/PAVER PATIOS FOR EACH UNIT



TREES



Sugar Maple (AS)



White Oak (QA)



Rutgans Dogwood (CR)



Emerald Green Arborvitae (TO)

SHRUBS



Variegated Redtwig Dogwood (CE)



Harry Lauders Walking Stick (CH)



Annabelle Hydrangea (HA)



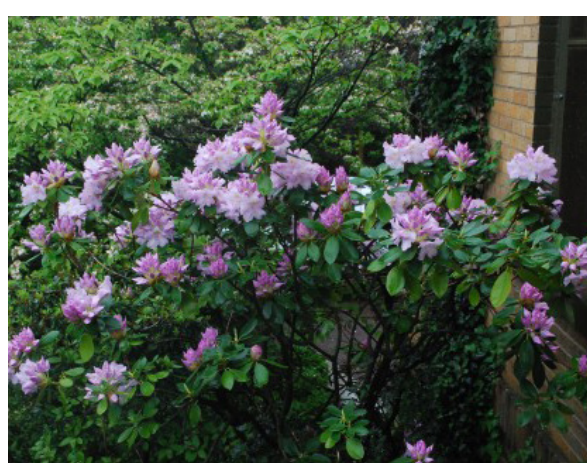
Limelight Panicle Hydrangea (HP)



Dwarf Growing Inkberry (IG)



Itea (IV)



Catawba Rhodo (RC)



Common Lilac (SV)



High Bush Blueberry (VC)

PERENNIALS AND GRASSES



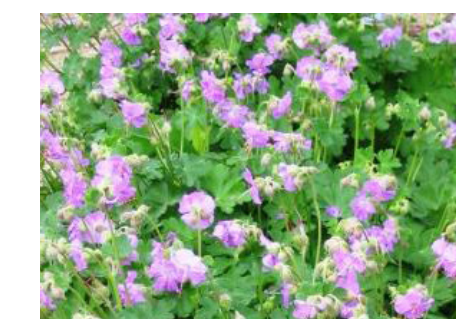
Lady's Mantel (am)



Feather Reed Grass (ck)



Wavy Hair Grass (df)



Bigroot Geranium (gm)



Sweet Woodruff (go)



Coral Bells (he)



Walkers Low Catmint (nf)

PROPOSED PLANT LIST

| KEY | QTY | LATIN NAME | COMMON NAME | MIN. SIZE | NOTES |
|-------------------------|-----|--|-----------------------------|-------------|-------|
| Deciduous Trees: | | | | | |
| AS | 1 | Acer saccharum 'Commemoration' | Sugar Maple | 2.-3" cal. | B&B |
| CR | 3 | Cornus rutgans | Rutgans Dogwood | 2.5-3" cal. | B&B |
| QA | 1 | Quercus alba | White Oak | 3-3.5" cal. | B&B |
| Evergreen Trees: | | | | | |
| TO | 15 | Thuja occ. 'Emerald Green' | Emerald Green Arborvitae | 6-7' ht. | B&B |
| Shrubs: | | | | | |
| CE | 9 | Cornus alba 'Elegantissima' | Variegated Redtwig Dogwood | 5 gal. | pots |
| CH | 2 | Corylus avellana contorta 'H.Lauder's W.Stick' | Harry Lauders Walking Stick | 7 gal. | pots |
| HA | 7 | Hydrangea arborescens 'Annabelle' | Hydrangea | 5 gal. | pots |
| HP | 3 | Hydrangea paniculata 'Limelight' | Limelight Panicle Hydrangea | 5 gal. | pots |
| IG | 22 | Ilex glabra 'Shamrock' | Dwarf growing Inkberry | 24-30" ht. | pots |
| IV | 2 | Itea virginica | Itea | 5 gal. | pots |
| RC | 1 | Rhododendron catawbiense | Catawba Rhodo | 7 gal. | pots |
| SV | 1 | Syringa vulgaris | Common Lilac | 7 gal. | pots |
| VC | 4 | Vaccinium corymbosum | Highbush Blueberry | 5 gal. | pots |
| Perennials: | | | | | |
| am | 15 | Alchemilla mollis | Lady's Mantel | 1 gal. | pots |
| ck | 18 | Calamagrostis 'Karl Foerster' | Feather Reed Grass | 2 gal. | pots |
| df | 6 | Descampsia flexuosa | Wavy Hair Grass | 2 gal. | pots |
| gm | 25 | Geranium macrorrhizum | Bigroot Geranium | 2 gal. | pots |
| go | 13 | Galium odoratum | Sweet Woodruff | 4" pots | pots |
| he | 4 | Heuchera 'Autumn Bride' | Coralbell | 2 gal. | pots |
| nf | 7 | Nepeta faassenii 'Walkers Low' | Walkers Low Catmint | 2 gal. | pots |

PLANTING NOTES

- All plant material shall conform to the guidelines established by "The American Standard for Nursery Stock", published by the American Hort.
- Any proposed substitutions of plant species shall be a plant of equivalent overall form, height and branching habit, flower, leaf and fruit, color and time of bloom.
- The Contractor shall locate and verify all utility line locations prior to excavation for tree pits and report any conflicts to the Landscape Architect.
- The rootballs of trees shall be planted 3" above adjacent finished grade. The rootballs of shrubs shall be planted 2" above adjacent finished grade. The rootflare of perennials shall be set at the level at which the plant was growing.
- All planting to be done under the full time supervision of a certified arborist, nurseryman or licensed Landscape Architect.
- All plants are to be thoroughly watered after installation, at least twice within the first 24 hours.