

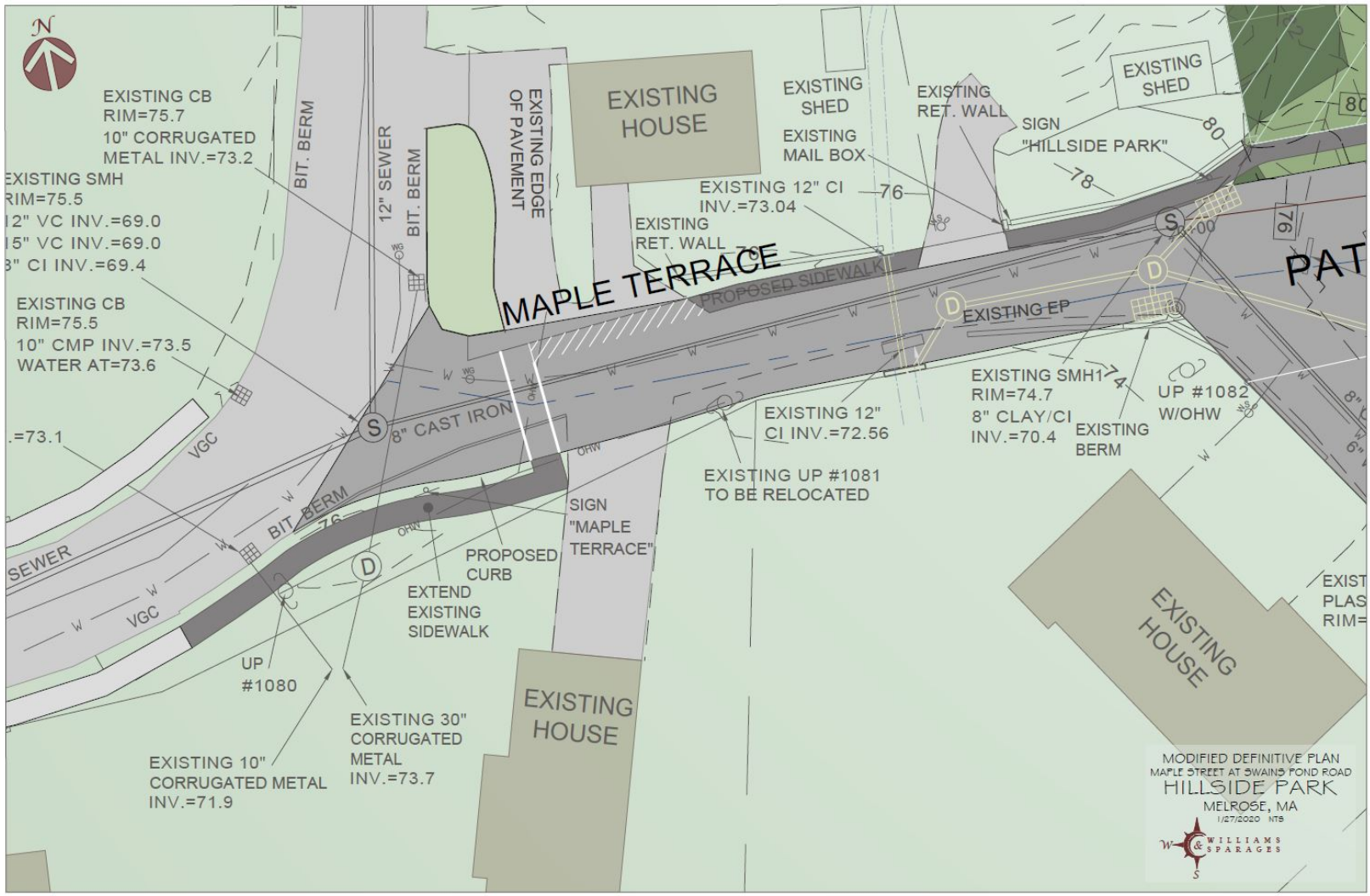
Hillside Park

Definitive Subdivision)

Planning Board (9 Building lots)



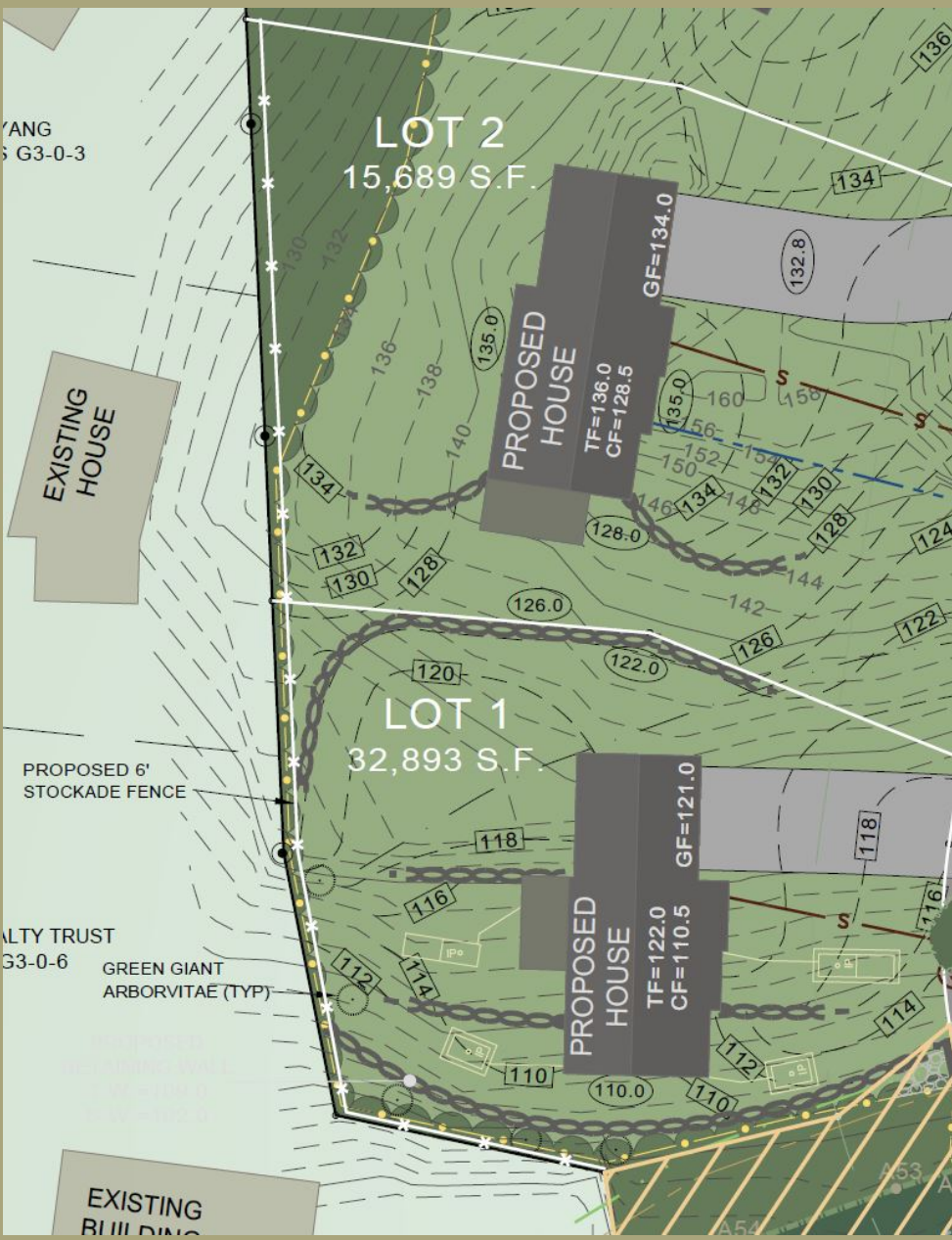
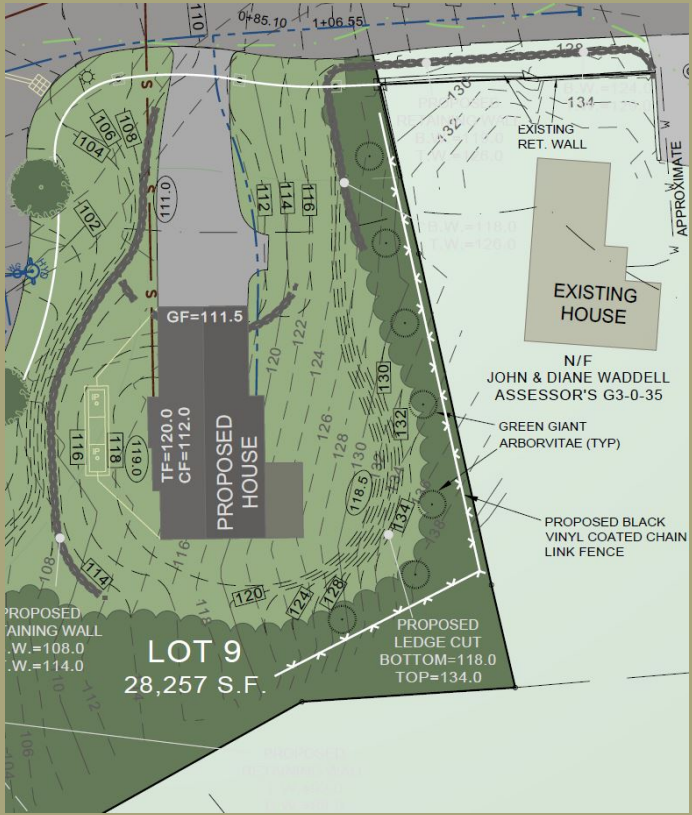
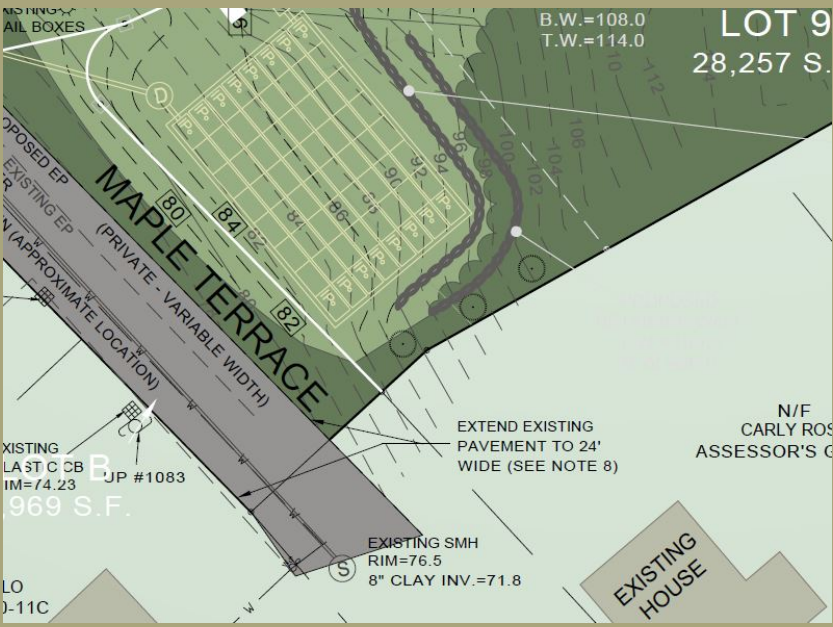
General Overview of Changes to plans since last Planning Board Meeting



SHEET 2

Maple Terrace Provisions

- ❖ New Water Line
- ❖ Widened Pavement
- ❖ New Sidewalk
- ❖ New Drain Culvert
- ❖ Repairs to sewer services



❖ Fencing and Vegetative screening Added in select locations



Many Items have been addressed in the revised information

- ❖ Addressed BSC comment Letter
- ❖ Addressed Melrose DPW comment letter
- ❖ Provide construction schedule outline
- ❖ Provide open space areas
- ❖ Provide screening
- ❖ Response to misc. raised questions
- ❖ Increased wetland replication area size



MODIFIED DEFINITIVE PLAN
HILLSIDE PARK
MELROSE, MA
1/27/2020 NTS

ZONE S0.6	
MINIMUM LOT AREA:	18,000 S.F.
MINIMUM LOT FRONTAGE:	100 FEET
MINIMUM LOT WIDTH:	100 FEET
MINIMUM LOT DEPTH:	80 FEET
MINIMUM COVERAGE:	35%
MINIMUM OPEN SPACE:	10%
MAXIMUM BUILDING HEIGHT:	35 FEET
MAXIMUM NUMBER OF STORIES:	3 1/2
MINIMUM FRONT YARD:	25 FEET
MINIMUM SIDE YARD:	15 FEET
MINIMUM REAR YARD:	45 FEET