

REPAIR PARKING LOT
MELROSE
READINESS CENTER

120 Main Street
Melrose, MA 02122

JFHQ-MA
Massachusetts
Military Division
2 Randolph Road
Hanscom AFB, MA 01731

NGMA Project 25209012

Revisions

No.	Date	Description	By
1	2/23/20	ADA	MEK

CSS ARCHITECTS INC.
107 Audubon Road
Building 2, Suite 300
Wakfield, MA 01880
css@casarchitects.com



Samioles Consultants Inc.
Civil Engineers • Land Surveyors
20 A Street
Framingham, MA 01701
508.877.6688
508.877.8349
www.samioles.com



Title: Demolition & Erosion Control

Scale: 1"=20'

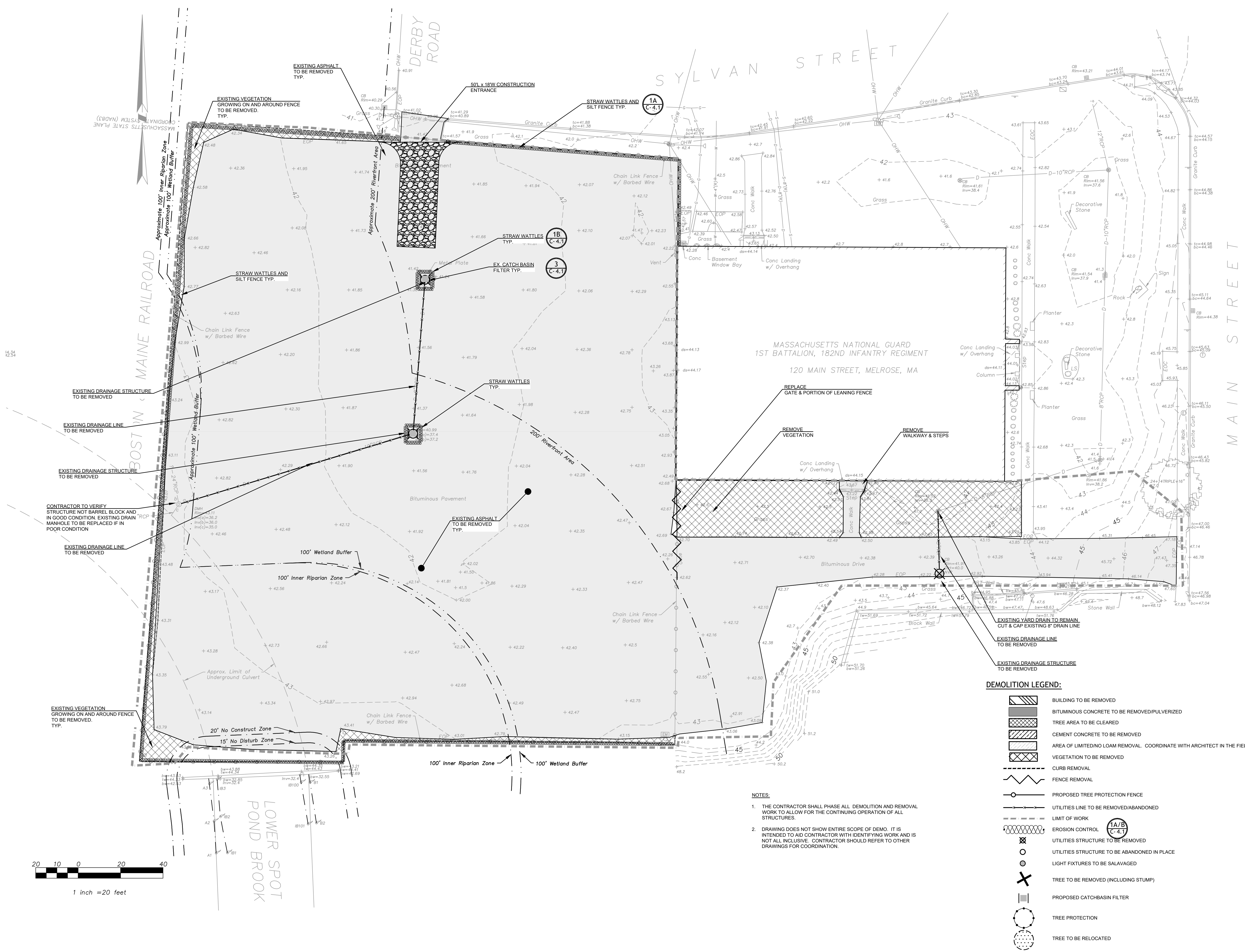
Date: 07-22-2021

Drawn: DJS

Checked: SJP

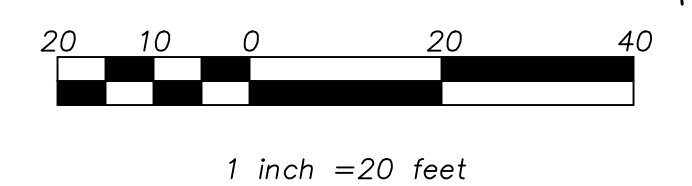
Project No: 50022

C-1.0



- DEMOLITION LEGEND:**
- BUILDING TO BE REMOVED
 - BITUMINOUS CONCRETE TO BE REMOVED/PULVERIZED
 - TREE AREA TO BE CLEARED
 - CEMENT CONCRETE TO BE REMOVED
 - AREA OF LIMITED LOAM REMOVAL. COORDINATE WITH ARCHITECT IN THE FIELD
 - VEGETATION TO BE REMOVED
 - CURB REMOVAL
 - FENCE REMOVAL
 - PROPOSED TREE PROTECTION FENCE
 - UTILITIES LINE TO BE REMOVED/ABANDONED
 - LIMIT OF WORK
 - EROSION CONTROL (1A/B C-4.1)
 - UTILITIES STRUCTURE TO BE REMOVED
 - UTILITIES STRUCTURE TO BE ABANDONED IN PLACE
 - LIGHT FIXTURES TO BE SALVAGED
 - TREE TO BE REMOVED (INCLUDING STUMP)
 - PROPOSED CATCHBASIN FILTER
 - TREE PROTECTION
 - TREE TO BE RELOCATED

- NOTES:**
- THE CONTRACTOR SHALL PHASE ALL DEMOLITION AND REMOVAL WORK TO ALLOW FOR THE CONTINUING OPERATION OF ALL STRUCTURES.
 - DRAWING DOES NOT SHOW ENTIRE SCOPE OF DEMO. IT IS INTENDED TO AID CONTRACTOR WITH IDENTIFYING WORK AND IS NOT ALL INCLUSIVE. CONTRACTOR SHOULD REFER TO OTHER DRAWINGS FOR COORDINATION.



REPAIR PARKING LOT
MELROSE
READINESS CENTER

120 Main Street
Melrose, MA 02122

JFHQ-MA
Massachusetts
Military Division
2 Randolph Road
Hanscom AFB, MA 01731

NGMA Project 25209012

Revisions

No.	Date	Description	By
1	12/23/20	ADA	MEK

CSS ARCHITECTS INC.
107 Audubon Road
Building 2, Suite 300
Wakefield, MA 01880
css@casarchitects.com



Samioles Consultants Inc.
Civil Engineers - Land Surveyors
20 A Street
Framingham, MA 01701
508.877.6688
508.877.8349
www.samioles.com



Title: Site Layout,
Materials, & Grading

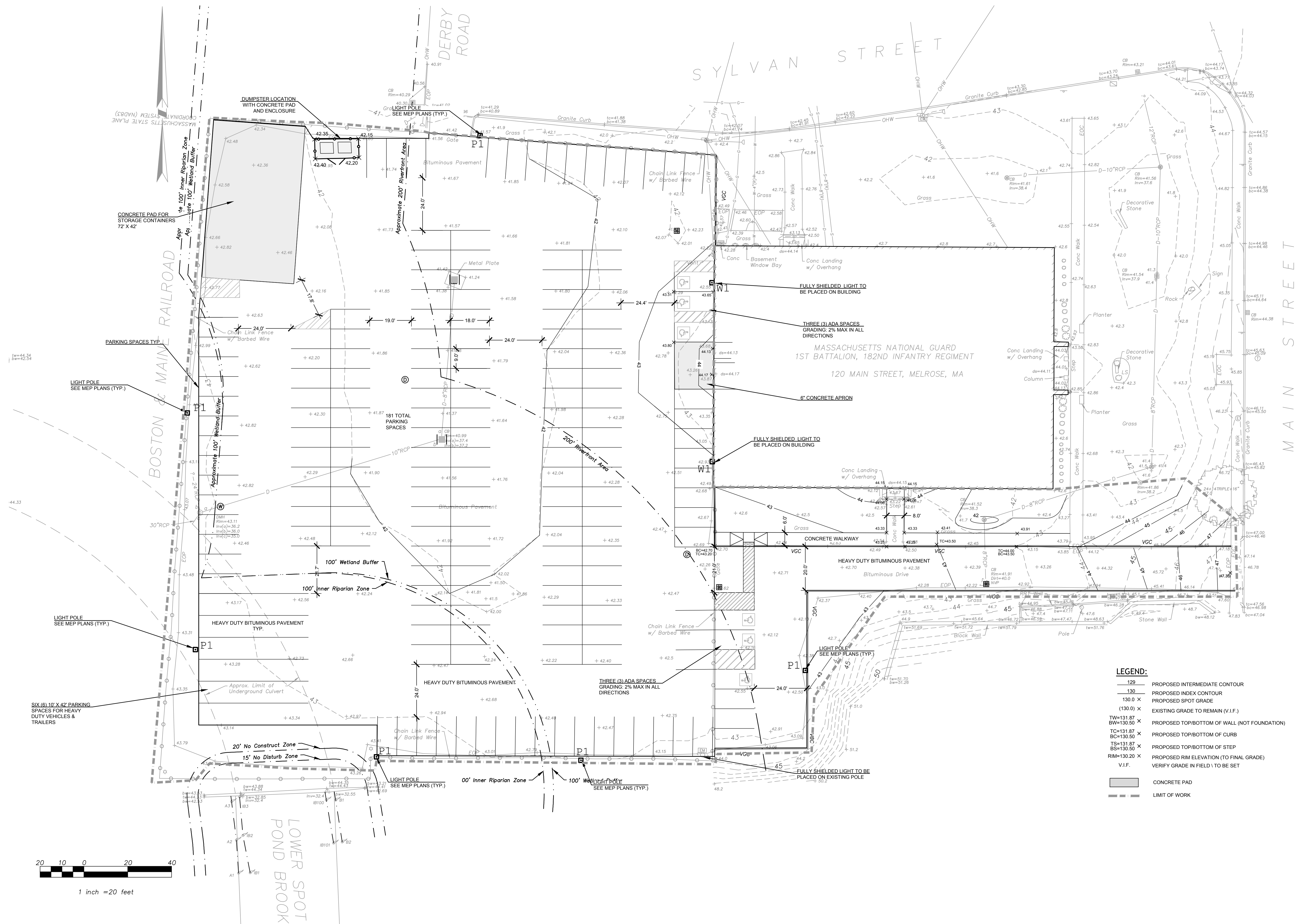
Scale: 1"=20'

Date: 07-22-2021
Drawn: DJS

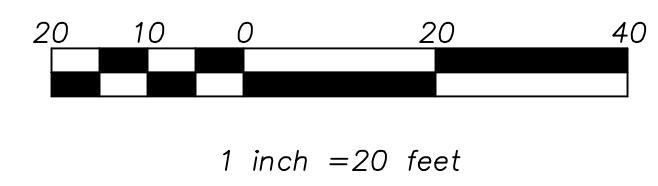
Checked: SJP

Project No:50022.00

C-2.0



- LEGEND:**
- 129 PROPOSED INTERMEDIATE CONTOUR
 - 130 PROPOSED INDEX CONTOUR
 - 130.0 X PROPOSED SPOT GRADE
 - (130.0) X EXISTING GRADE TO REMAIN (V.I.F.)
 - TW=131.87 X PROPOSED TOP/BOTTOM OF WALL (NOT FOUNDATION)
 - BW=130.50 X PROPOSED TOP/BOTTOM OF CURB
 - TC=131.87 X PROPOSED TOP/BOTTOM OF CURB
 - BC=130.50 X PROPOSED TOP/BOTTOM OF CURB
 - TS=131.87 X PROPOSED TOP/BOTTOM OF STEP
 - BS=130.50 X PROPOSED RIM ELEVATION (TO FINAL GRADE)
 - RM=130.20 X VERIFY GRADE IN FIELD TO BE SET
 - V.I.F. VERIFY GRADE IN FIELD TO BE SET
 - CONCRETE PAD
 - LIMIT OF WORK



REPAIR PARKING LOT
MELROSE
READINESS CENTER

120 Main Street
Melrose, MA 02122

JFHQ-MA
Massachusetts
Military Division
2 Randolph Road
Hanscom AFB, MA 01731

NGMA Project 25209012

Revisions

No.	Date	Description	By
1	2/23/20	ADA	MEK

CSS ARCHITECTS INC.
107 Audubon Road
Building 2, Suite 300
Waverfield, MA 01880
css@casarchitects.com

samiotes

Samiotes Consultants Inc.
Civil Engineers • Land Surveyors
20 A Street
Frammingham, MA 01701
508.877.6688
508.877.8349
www.samiotes.com



Title: DRAINAGE &
UTILITIES PLAN

Scale: 1"=20'

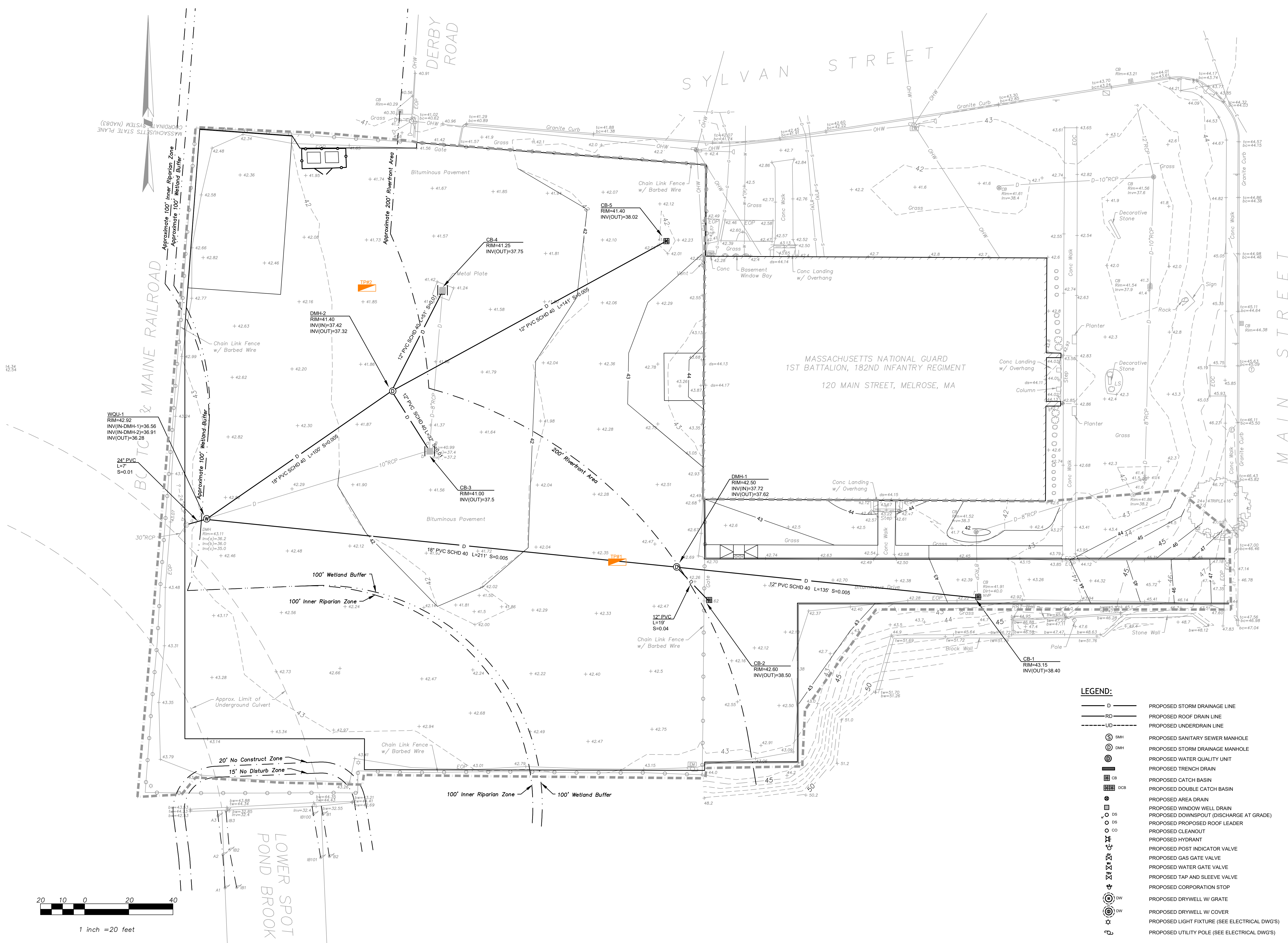
Date: 07-22-2021

Drawn: DJS

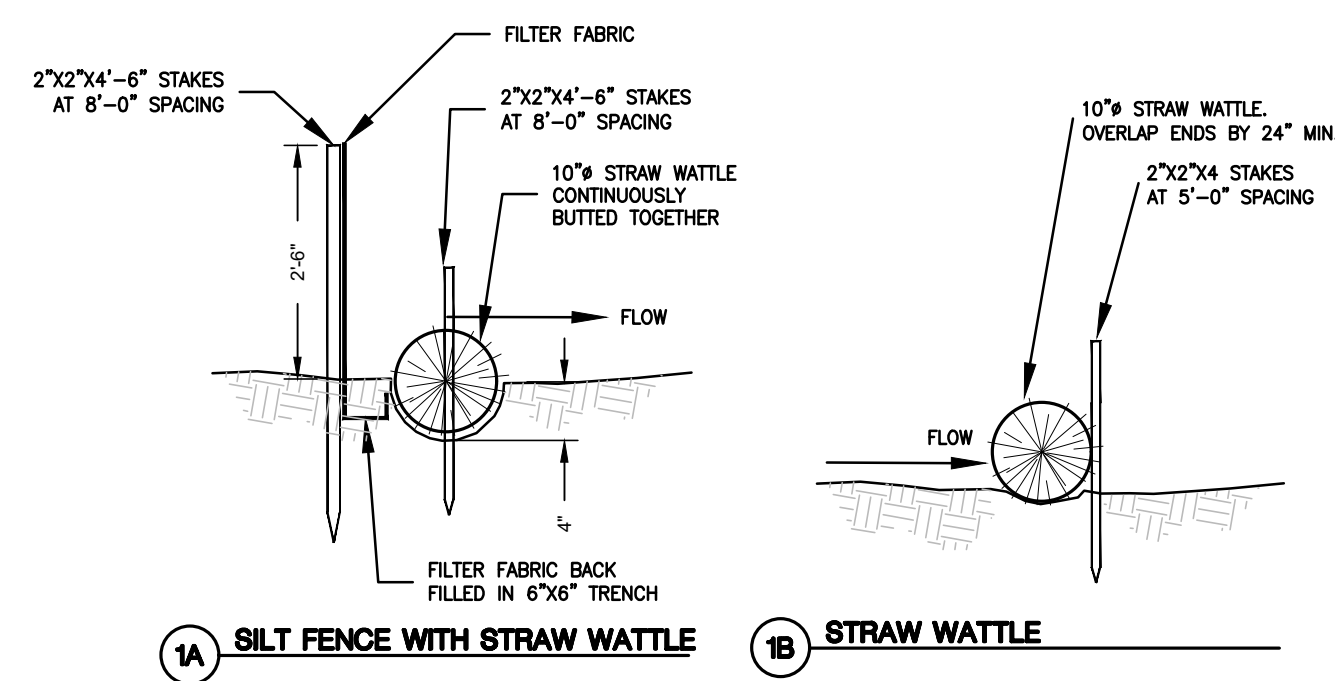
Checked: SJP

Project No:50022

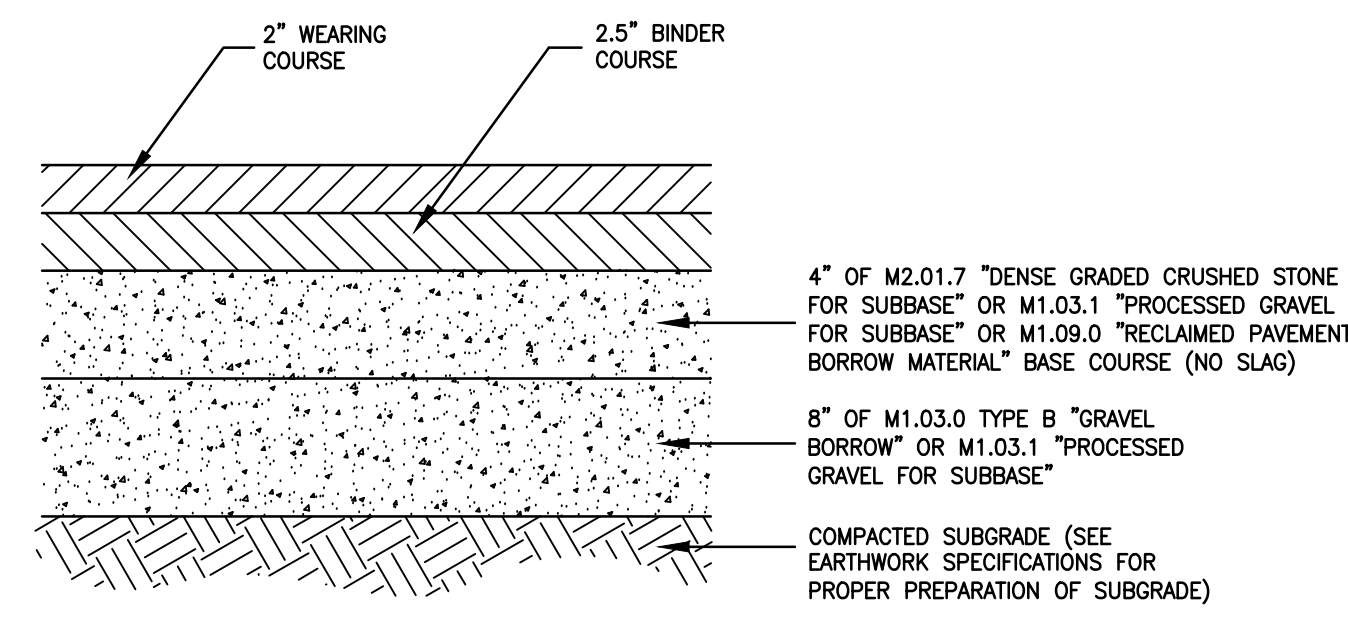
C-3.0



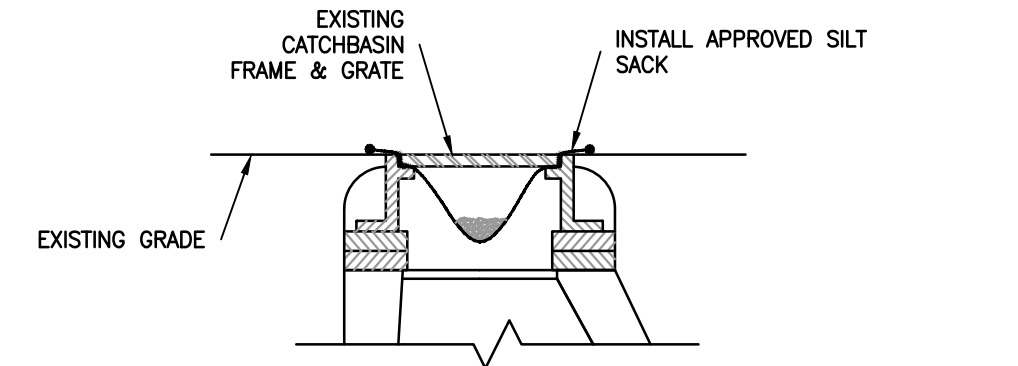
- LEGEND:**
- D — PROPOSED STORM DRAINAGE LINE
 - RD — PROPOSED ROOF DRAIN LINE
 - UD — PROPOSED UNDERDRAIN LINE
 - SMH — PROPOSED SANITARY SEWER MANHOLE
 - DMH — PROPOSED STORM DRAINAGE MANHOLE
 - WQU — PROPOSED WATER QUALITY UNIT
 - TD — PROPOSED TRENCH DRAIN
 - CB — PROPOSED CATCH BASIN
 - DCB — PROPOSED DOUBLE CATCH BASIN
 - AD — PROPOSED AREA DRAIN
 - OW — PROPOSED WINDOW WELL DRAIN
 - DS — PROPOSED DOWNSPOUT (DISCHARGE AT GRADE)
 - OS — PROPOSED PROPOSED ROOF LEADER
 - CL — PROPOSED CLEANOUT
 - HY — PROPOSED HYDRANT
 - PIV — PROPOSED POST INDICATOR VALVE
 - GGV — PROPOSED GAS GATE VALVE
 - WGV — PROPOSED WATER GATE VALVE
 - TSSV — PROPOSED TAP AND SLEEVE VALVE
 - CS — PROPOSED CORPORATION STOP
 - DW — PROPOSED DRYWELL W/ GRATE
 - DWC — PROPOSED DRYWELL W/ COVER
 - LF — PROPOSED LIGHT FIXTURE (SEE ELECTRICAL DWG'S)
 - UP — PROPOSED UTILITY POLE (SEE ELECTRICAL DWG'S)



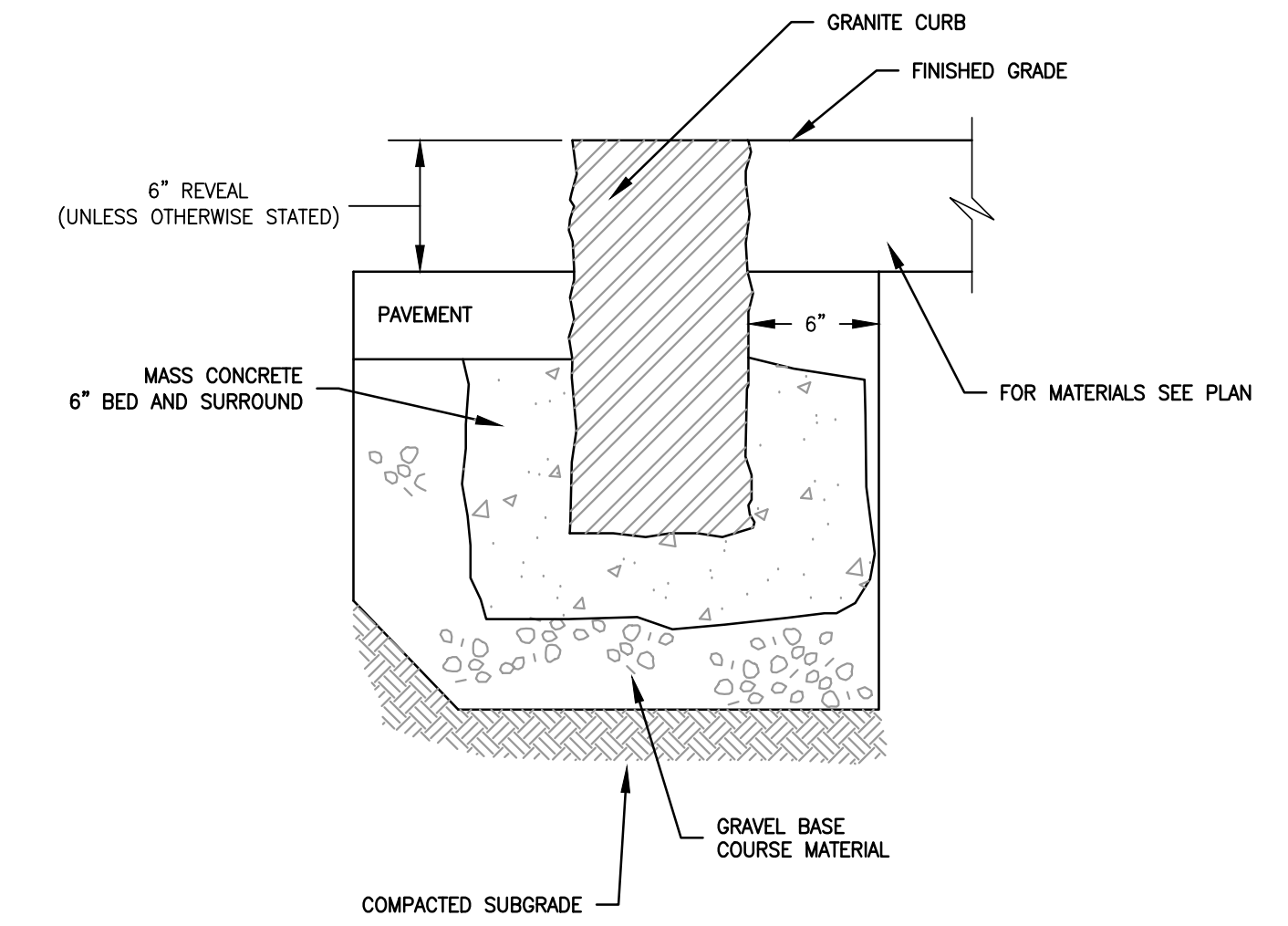
1 EROSION CONTROL DETAILS
 NTS



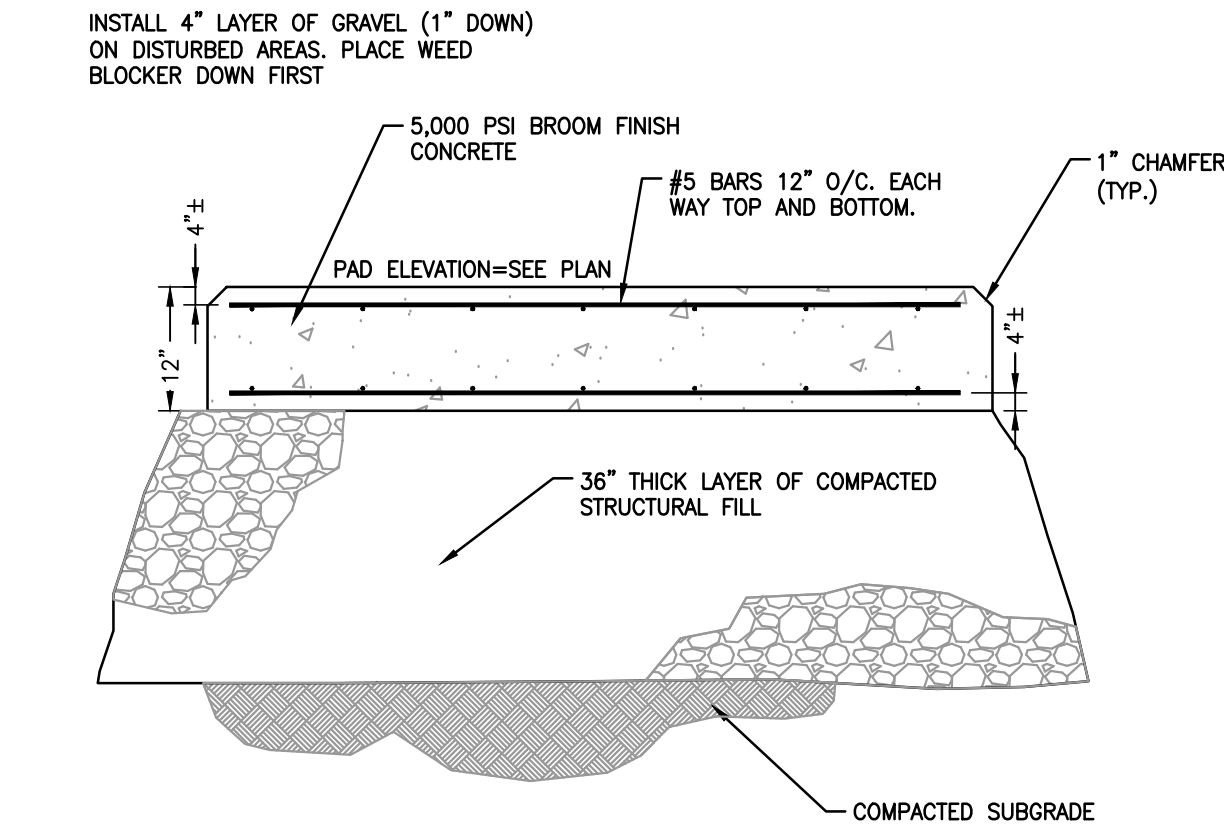
2 HEAVY DUTY BITUMINOUS PAVEMENT
 NTS



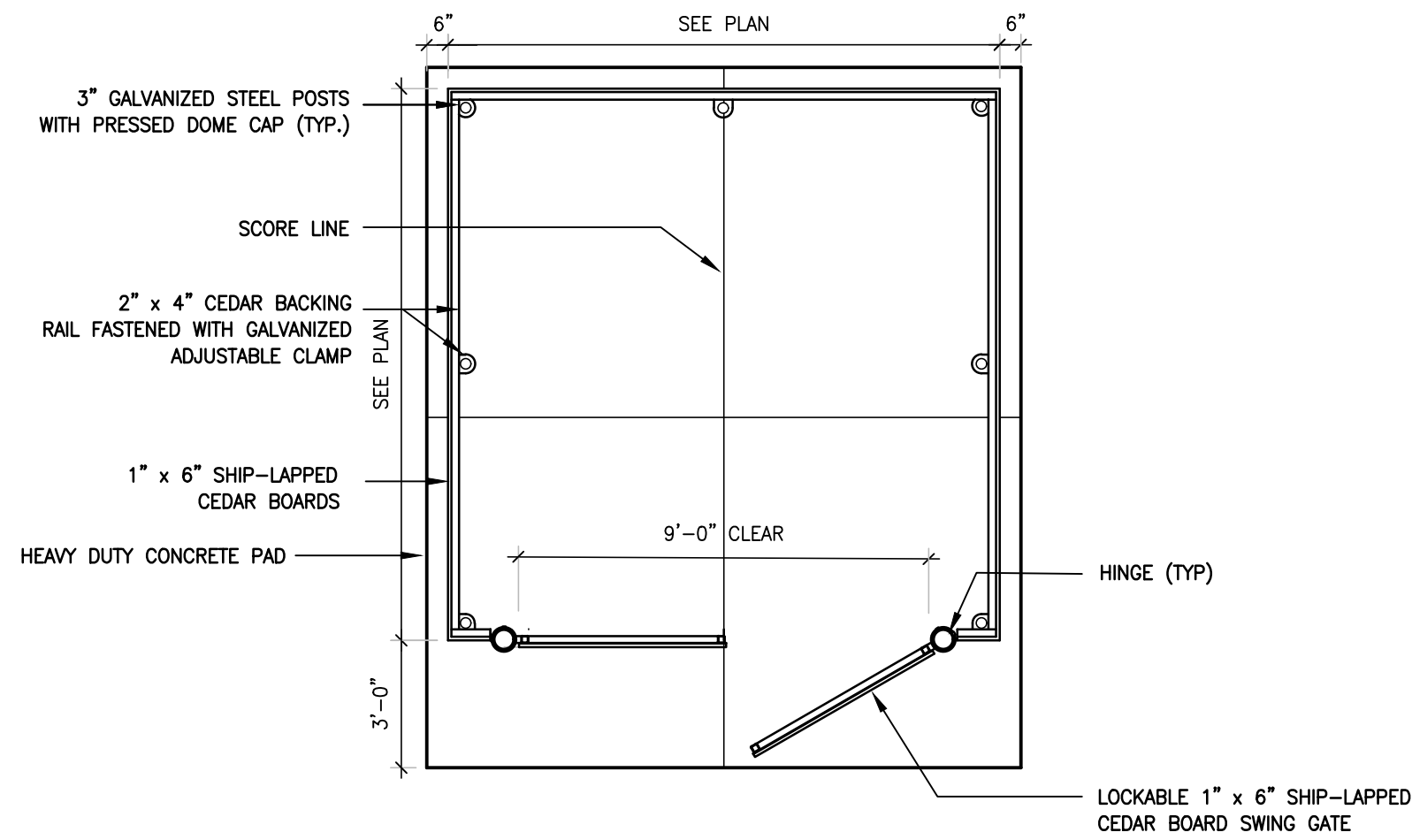
3 EX. CATCHBASIN W/ SILT SACK
 NTS



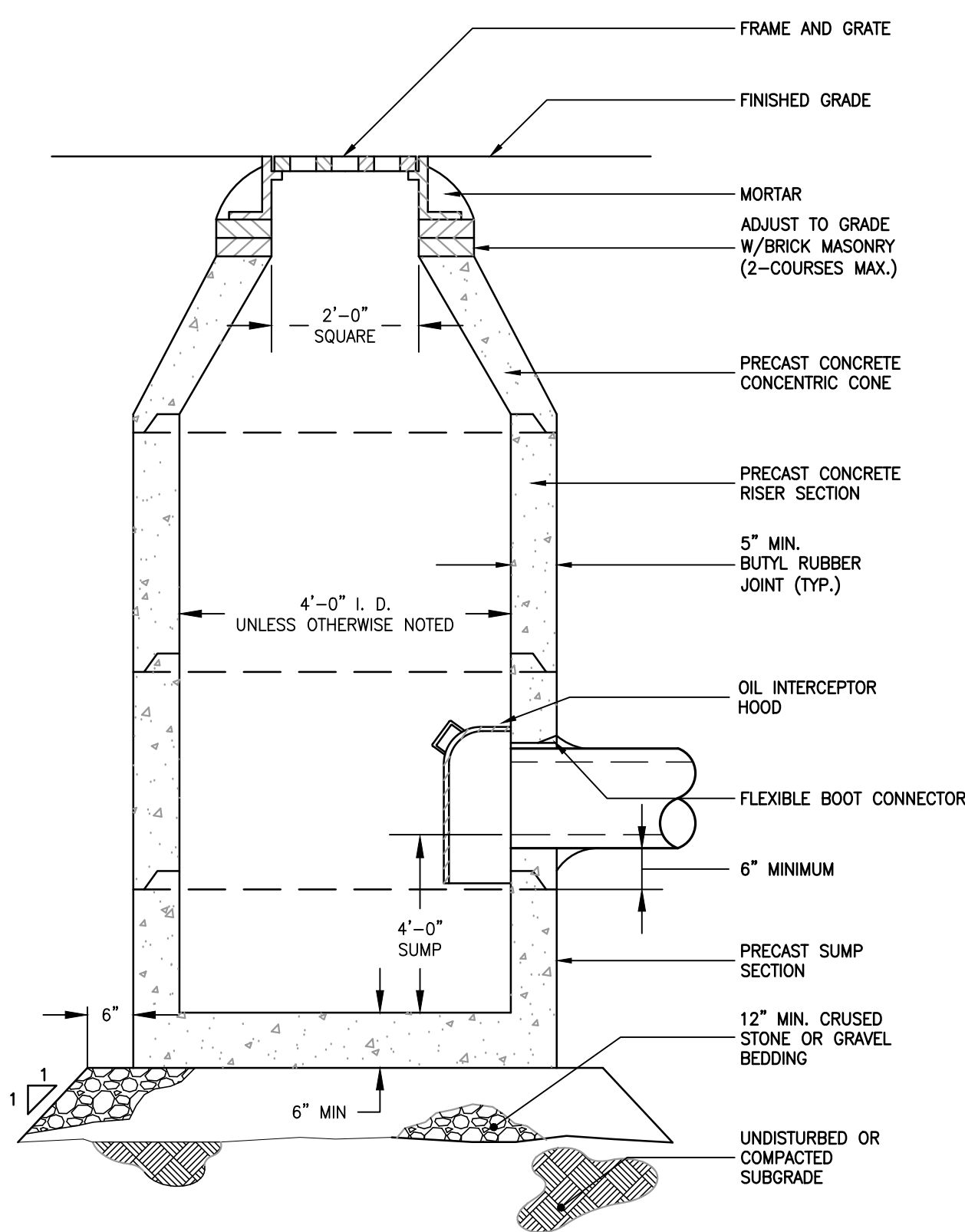
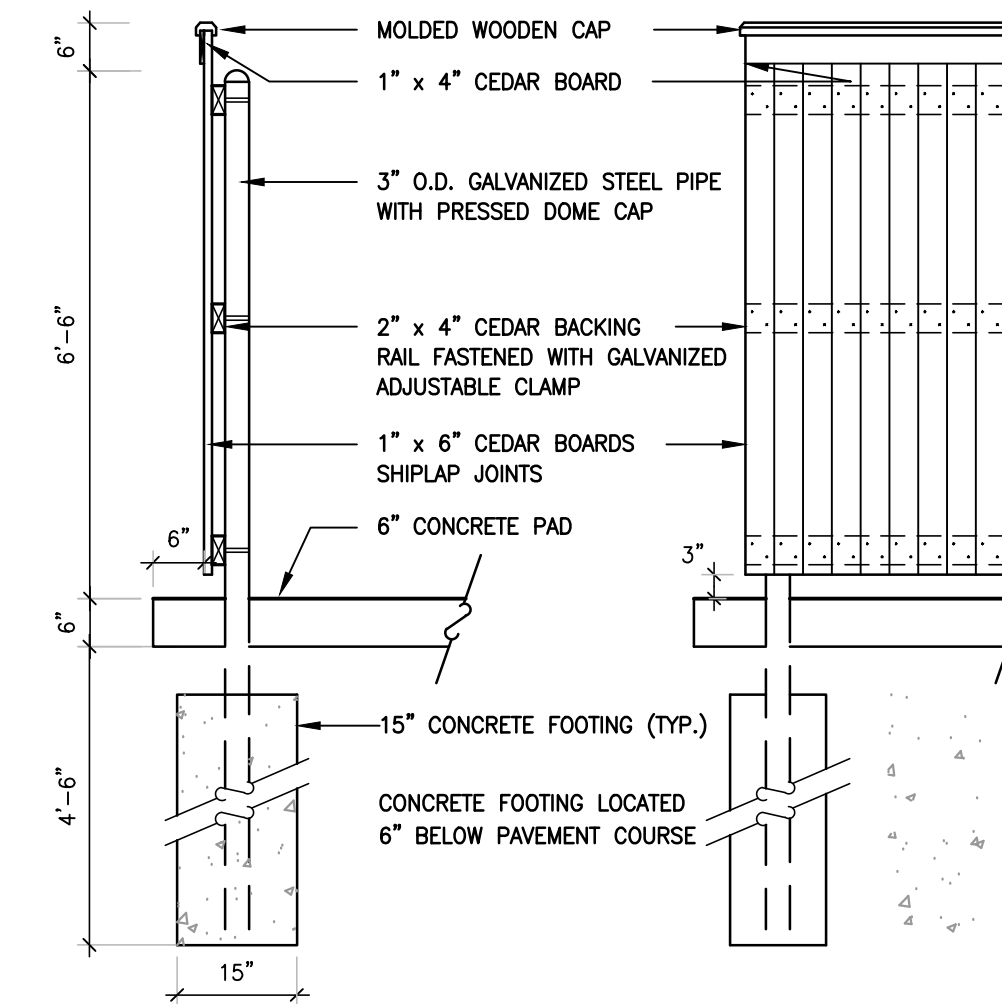
6 VERTICAL GRANITE CURB
 NTS



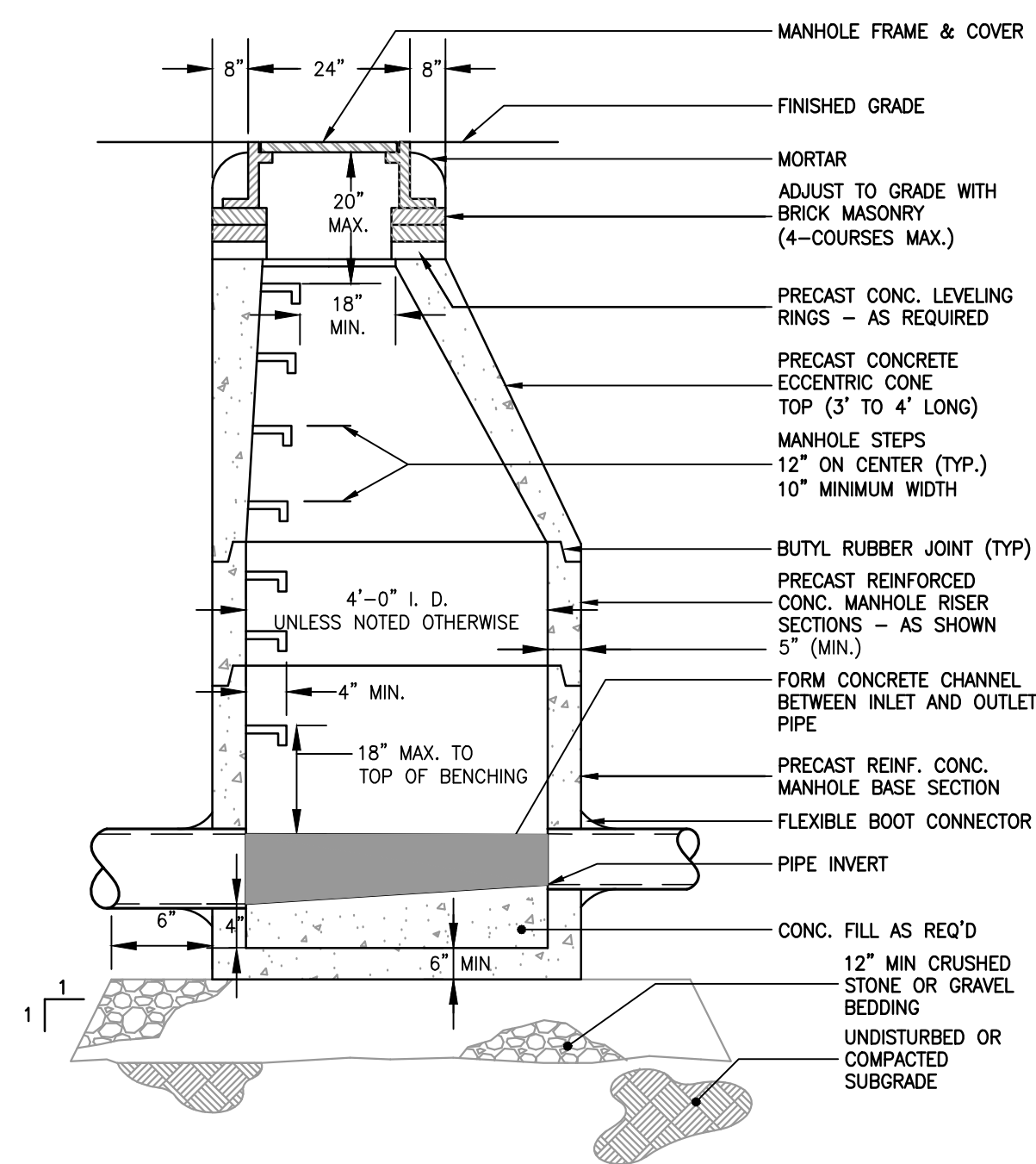
4 CONCRETE PAD
 NTS



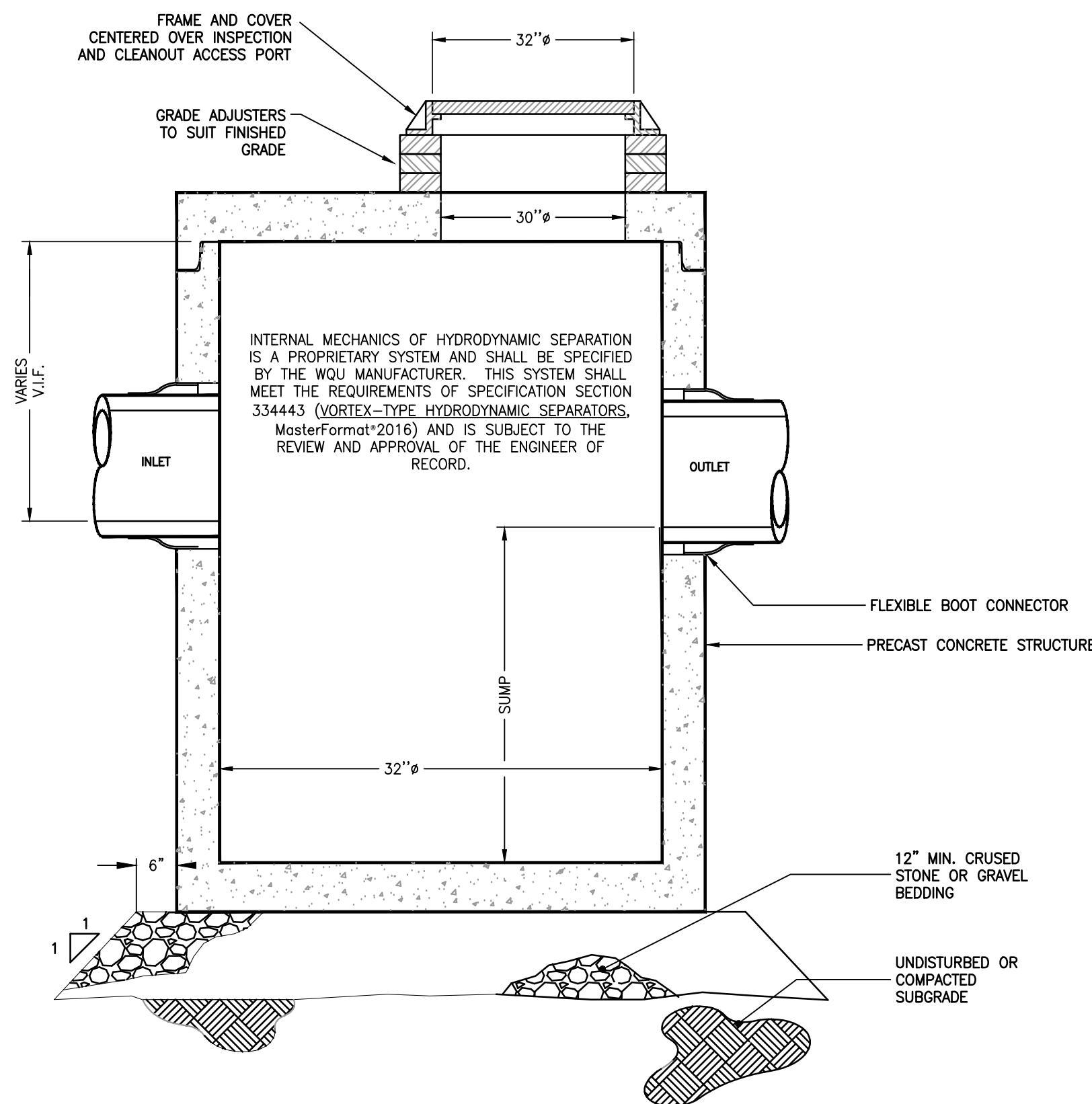
5 DUMPSTER ENCLOSURE PLAN & ENCLOSURE
 SCALE: NTS



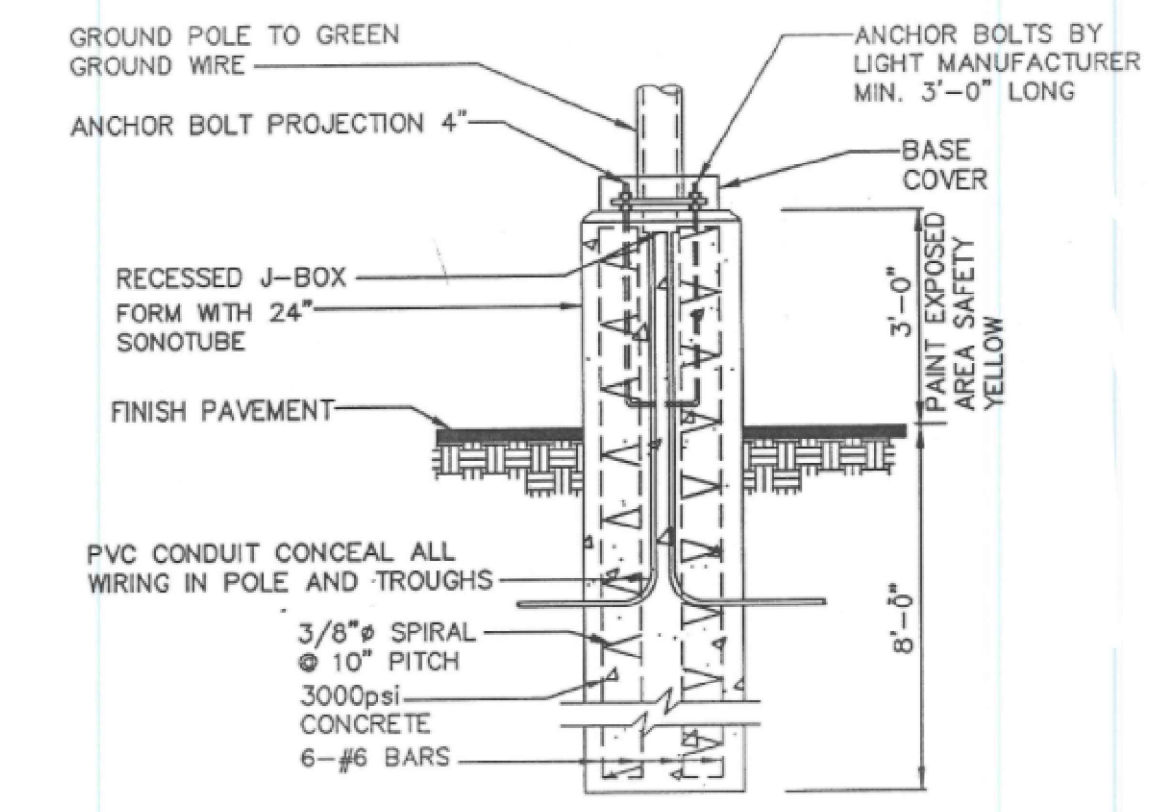
7 CATCH BASIN
 NTS



8 PRECAST STORM DRAIN MANHOLE
 NTS



9 WATER QUALITY UNIT (WQU)
 NTS

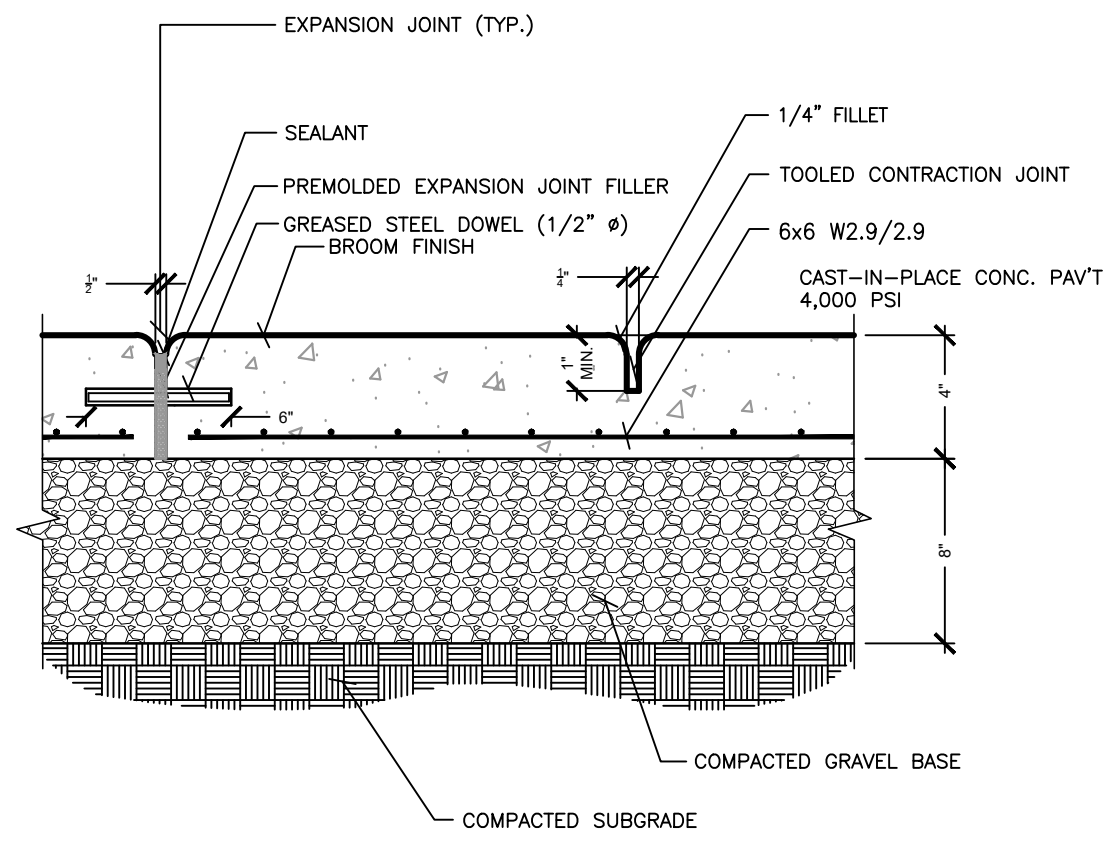


10 LIGHT POLE BASE
 NTS

Revisions

No.	Date	Description	By



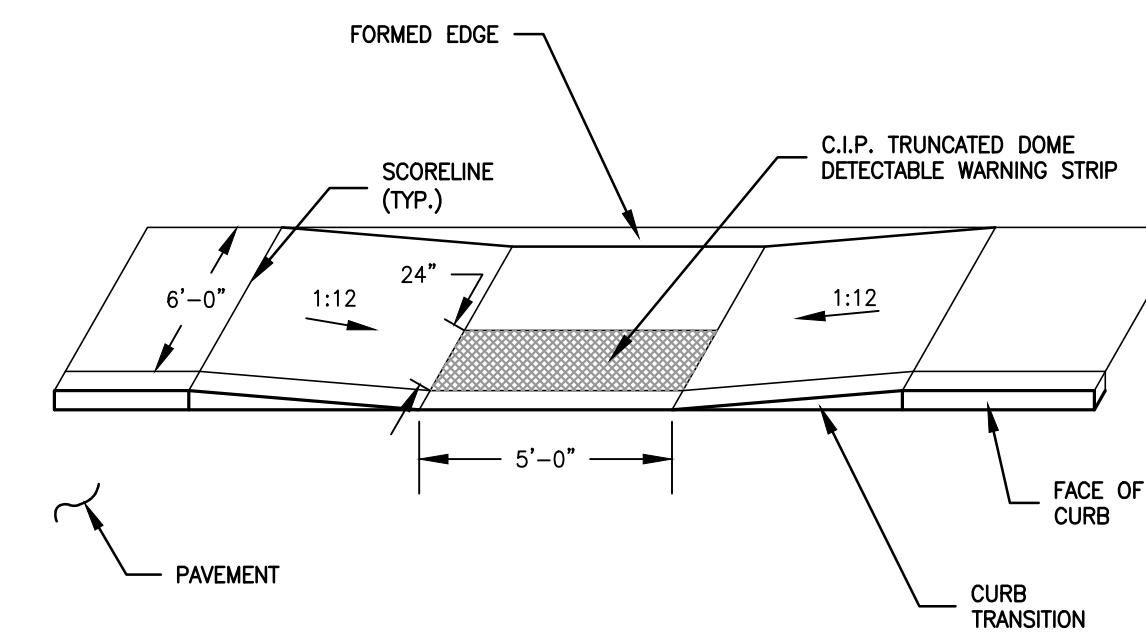
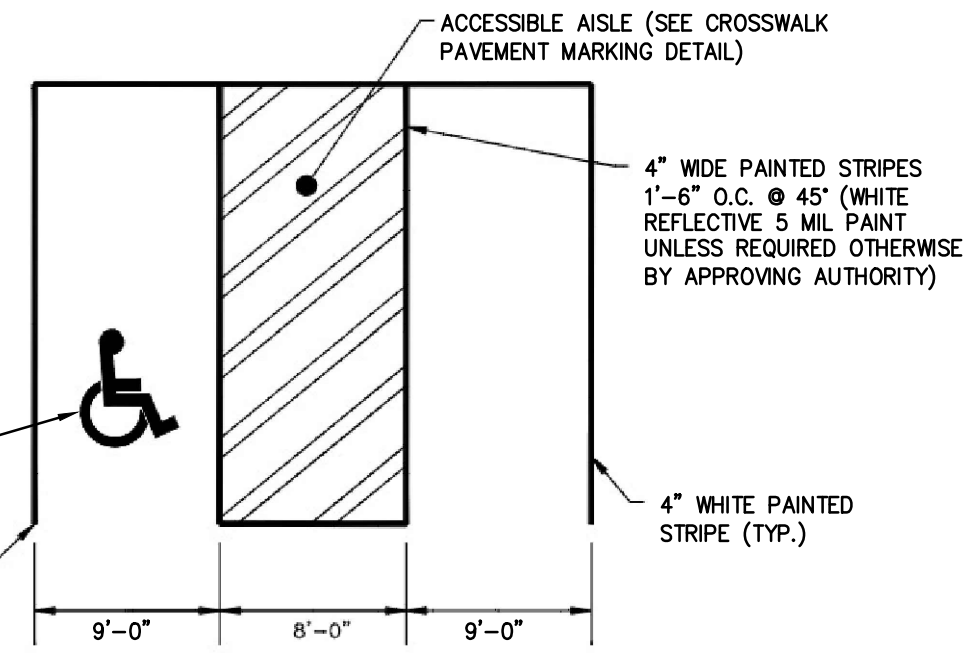


NOTE:

- HANDICAPPED PARKING AREAS SHALL BE CONSTRUCTED PER LOCAL, STATE, AND/OR FEDERAL ACCESSIBILITY REQUIREMENTS.
- MAXIMUM PAVEMENT SLOPES IN ADA PARKING AREAS SHALL NOT EXCEED 2% IN ALL DIRECTIONS.

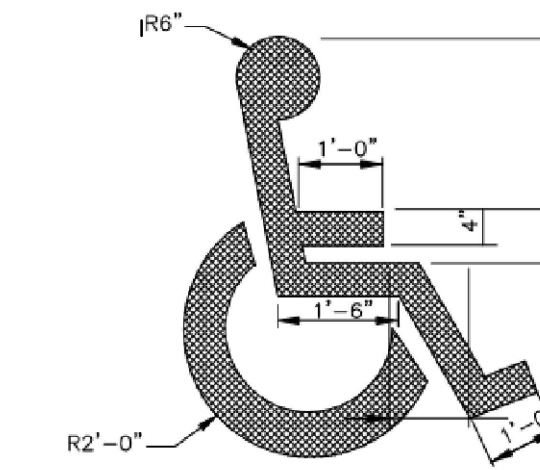
NATIONAL STANDARD HANDICAP SYMBOL (TYP.) PAINTED ON PAVEMENT

ALL STALLS TO BE STRIPED WITH SOLID 4" WIDE LINES



NOTES:

- RAMP CROSS SECTION TO BE SAME AS ADJ. SIDEWALK; I.E.: DEPTH OF SURFACE AND FOUNDATION.
- DIMENSIONS ARE SUBJECT TO CHANGE IN FIELD. ALL SLOPES AND DIMENSIONS TO COMPLY WITH ADA/MAAB REQUIREMENTS.



NOTE:

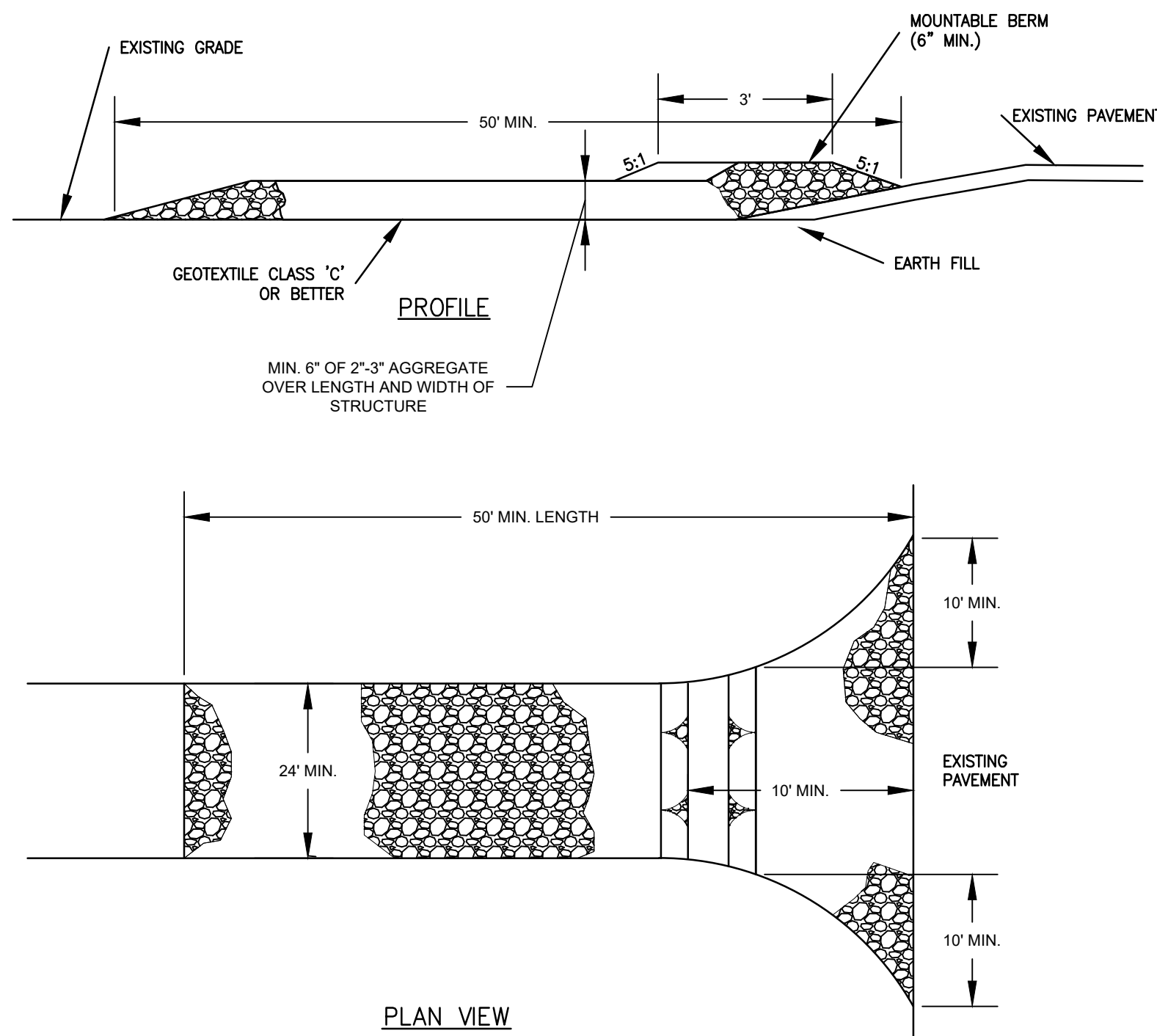
- AT CURVED PARKING AREAS AT NARROWEST ARC OF SPACE
- PAINT TO BE CHLORINATED RUBBER ALKYD FS TT, TYPE III QUICK DRYING, NONBLEEDING, COLOR PER LOCAL CODE.

1 BROOM FINISH CONCRETE WALKWAY
NTS

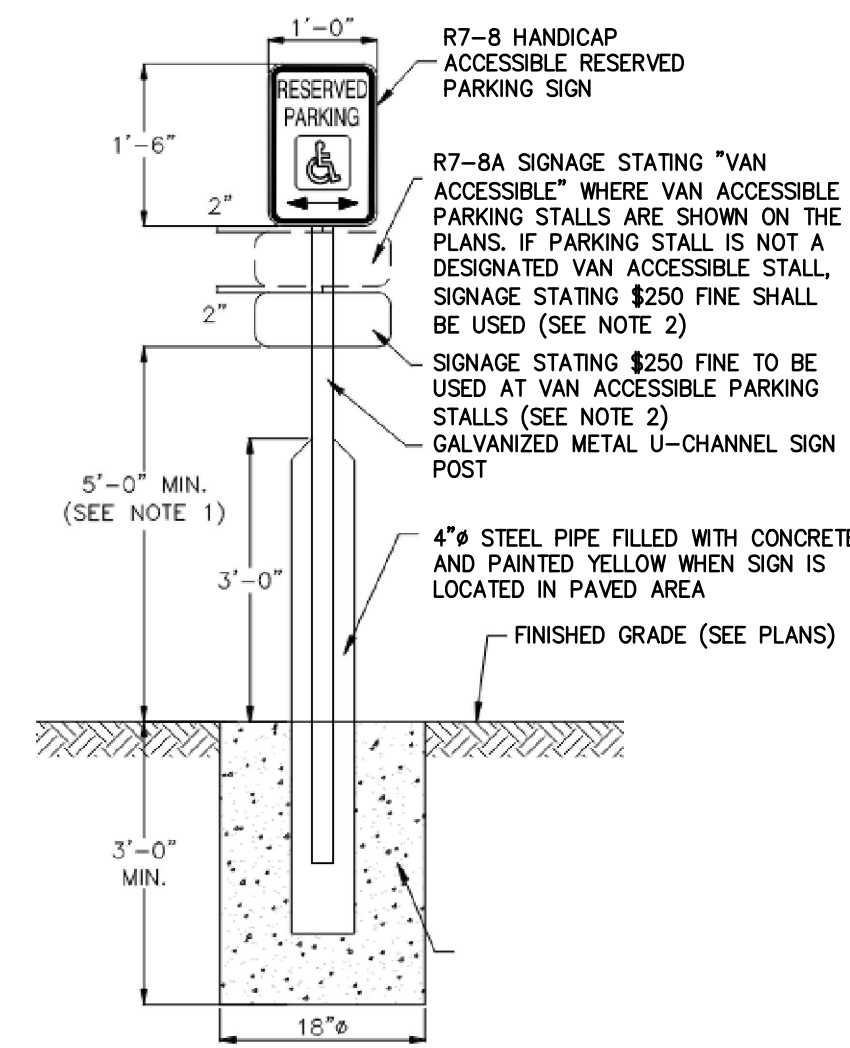
2 ACCESSIBLE PARKING STALL
NTS

3 CURB CUT AND RAMP
NTS

4 HANDICAP PAINTED SYMBOL
NTS



5 STABILIZED CONSTRUCTION ENTRANCE
NTS



NOTE:

- ACCESSIBLE PARKING SIGNS SHALL BE CENTERED AT THE FRONT OF EACH PARKING STALL AND INSTALLED WITH A MINIMUM HEIGHT OF FIVE (5) FEET ABOVE FINISHED PAVEMENT OR GRADE ELEVATION UNLESS OTHERWISE DIRECTED BY LOCAL BUILDING CODES.
- CONTRACTOR SHALL VERIFY FINE AMOUNT WITH LOCAL BUILDING CODES PRIOR TO INSTALLATION.

6 HANDICAP PARKING SIGN
NTS

**REPAIR PARKING LOT
MELROSE
READINESS CENTER**

120 Main Street
Melrose, MA 02122

JFHQ-MA
Massachusetts
Military Division
2 Randolph Road
Hanscom AFB, MA 01731

NGMA Project 25209012

Revisions

No.	Date	Description	By
1	12/23/20	ADA	MEK

CSS ARCHITECTS INC.

107 Audubon Road
Building 2, Suite 300
Waverfield, MA 01880
css@casarchitects.com



Samiotes Consultants Inc.
Civil Engineers • Land Surveyors

20 A Street
Frammingham, MA 01701
508.877.6688
508.877.8349
www.samiotes.com



Title: Civil Details

Scale: NTS
Date: 07-22-2021

Drawn: DJS

Checked: SJP
Project No:
50022.00

C-4.1