



July 22, 2021

24-hour Repair Work on an Underground Transmission Line

Dear Neighbor,

A few weeks ago, you received notification about an underground transmission line in your area in need of emergency repairs. As part of the repair process, we will begin in the coming week continuous 24-hour work for approximately three (3) days. Be assured that this work will not interrupt electric service to your property and there is no risk to public safety. All people working on the repair carry identification, and no workers will ask to or need to enter your home.

What You Can Expect

Since your property is near where the **continuous 24-hour work** will be taking place, here is important information about how we will work in the area.

- **Where:** 24-hour activity in Melrose will take place near 71 Howard Street and near 89 Howard Street
- **What:** 24-hour repair work will include:
 - Setting up a safe and secure work site with cones and lights
 - The installation of a temporary “shed” over the recently excavated pits where the work will be taking place
 - Use of liquid nitrogen to temporarily freeze a portion of the underground transmission line
 - Large vehicles and supplies parked adjacent to the pits to support the work
 - A generator and a light bank
 - At the end of the 24-hour work, street plates will be placed over the excavation to safely secure the work site
- **When:** continuous 24-hour work is anticipated to begin the week of July 26, 2021. Once begun, the work will continue for up to three (3) days.
- **Traffic Management:** We are coordinating closely with your community on effective traffic management throughout the repair work. We anticipate Howard Street to remain open to alternating traffic throughout the work. In the event a temporary detour is required to maintain a safe work zone, a map is on the back of this letter.

Always Working to Serve You Better

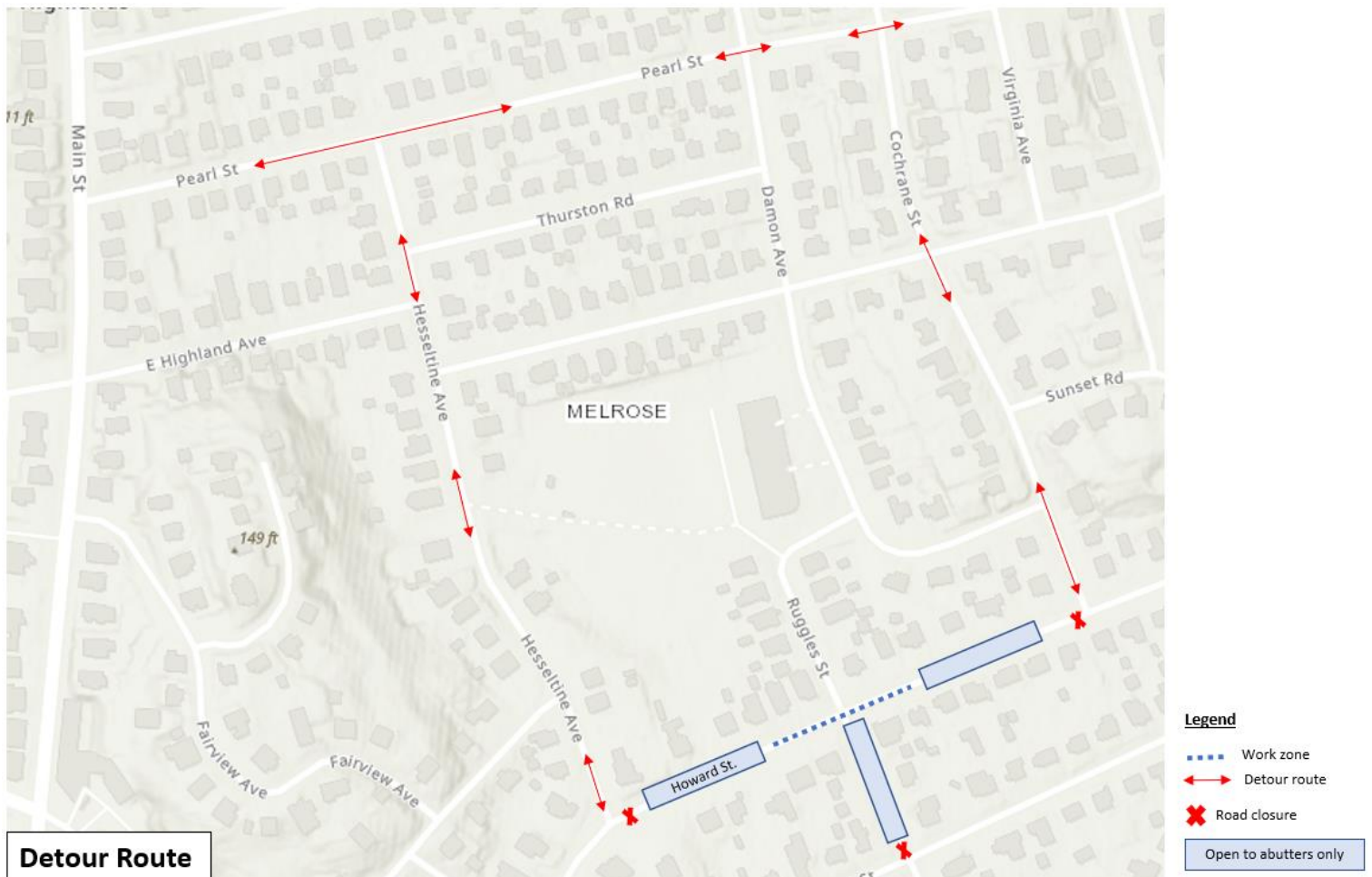
Eversource is committed to being a good neighbor and doing our work with respect for you and your property. If you have questions or concerns, please **contact us** by email at projectinfo@eversource.com or by phone at 1-800-793-2202.

Sincerely,

Meredith Boericke

Project Services Manager
Eastern Massachusetts Transmission Projects

If a detour becomes necessary the below route will be temporarily implemented, and proper signage will be in place



Equipment you may see

Liquid Nitrogen Vessel



“Shed” (container)

