

# LOWER MAIN STREET SHARED STREETS PILOT PROJECT

---

Public Meeting, July 21, 2021

Presented by:

Melrose DPW, MAPC

Melrose Ped-Bike Advisory Committee



# PRESENTERS

Mayor Paul Brodeur

Shawn MacMaster, City Councilor

---

Elena Proakis Ellis, P.E., DPW Director

Vonnie Reis, P.E., City Engineer

David Loutzenheiser, MAPC

Dan Krechmer, Melrose Ped-Bike Advisory Committee



# PROJECT HISTORY

## Project Background

- Main Street from Wyoming to Malden line identified as priority for “road diet” in 2017 Complete Streets Prioritization Plan
- Main Street from Mt. Vernon to Sylvan has the lowest roadway condition score along the Main Street corridor
- Slated for paving in 2019 but delayed due to necessary utility work
- City completed water main and service improvements in 2019
- City completed \$50K of sidewalk upgrades in 2020 using state earmark funds



# PROJECT HISTORY

## Project Background

- National Grid completed gas main and service replacements in 2020
- Eversource completed electrical transmission system upgrade in 2021
- Final paving scheduled for fall 2021
- MassDOT grant received for shared streets program
- MAPC grant received for technical assistance



# LOWER MAIN STREET SHARED STREETS PILOT PROJECT

- Goals:
  - Encourage use of the corridor by pedestrians and cyclists
  - Provide safer design for all users
  - Provide connectivity between Melrose Center and Malden
  - Safety improvements for vulnerable populations
  - Improve access to Oak Grove T Station for pedestrians and cyclists





# LOWER MAIN STREET SHARED STREETS PILOT PROJECT

- Funding:
  - Technical assistance provided by MAPC and Ped-Bike Committee
  - Pilot project funded by a grant
  - Final improvements will be funded by City of Melrose

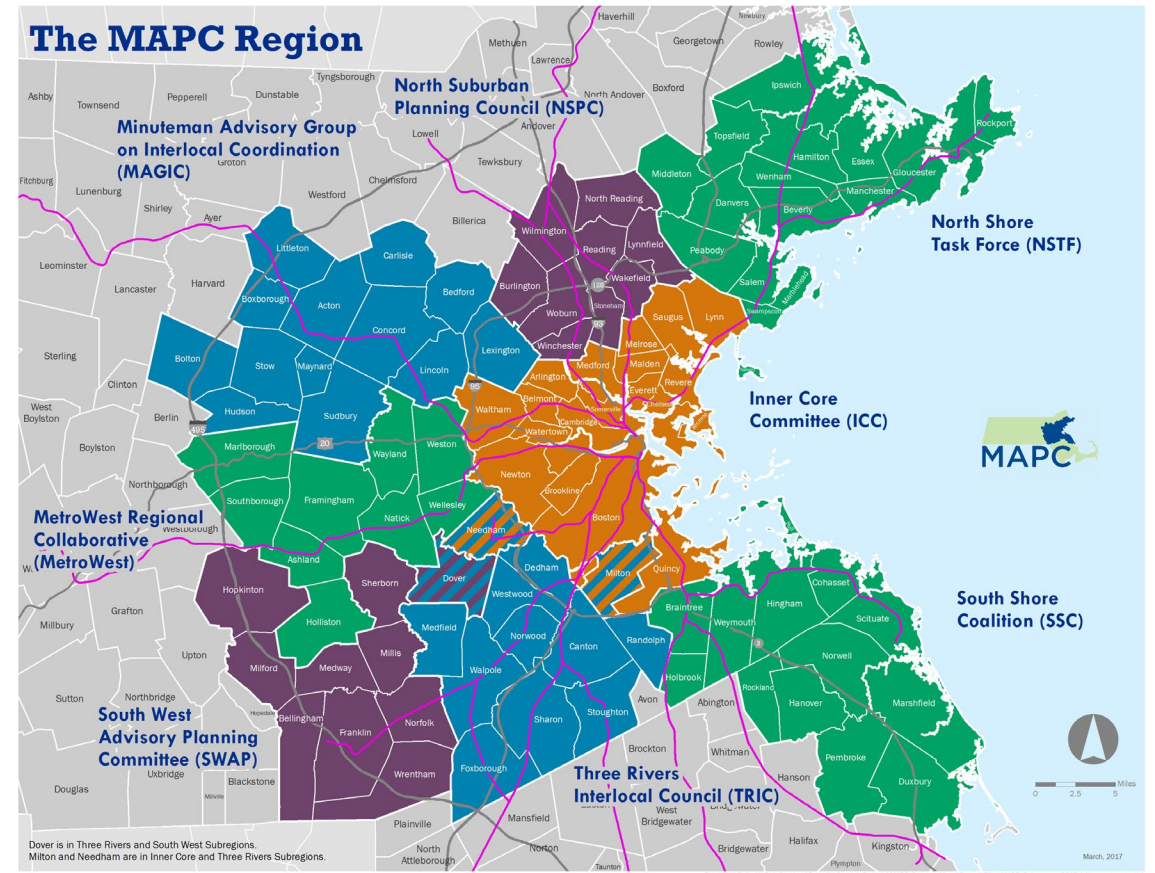


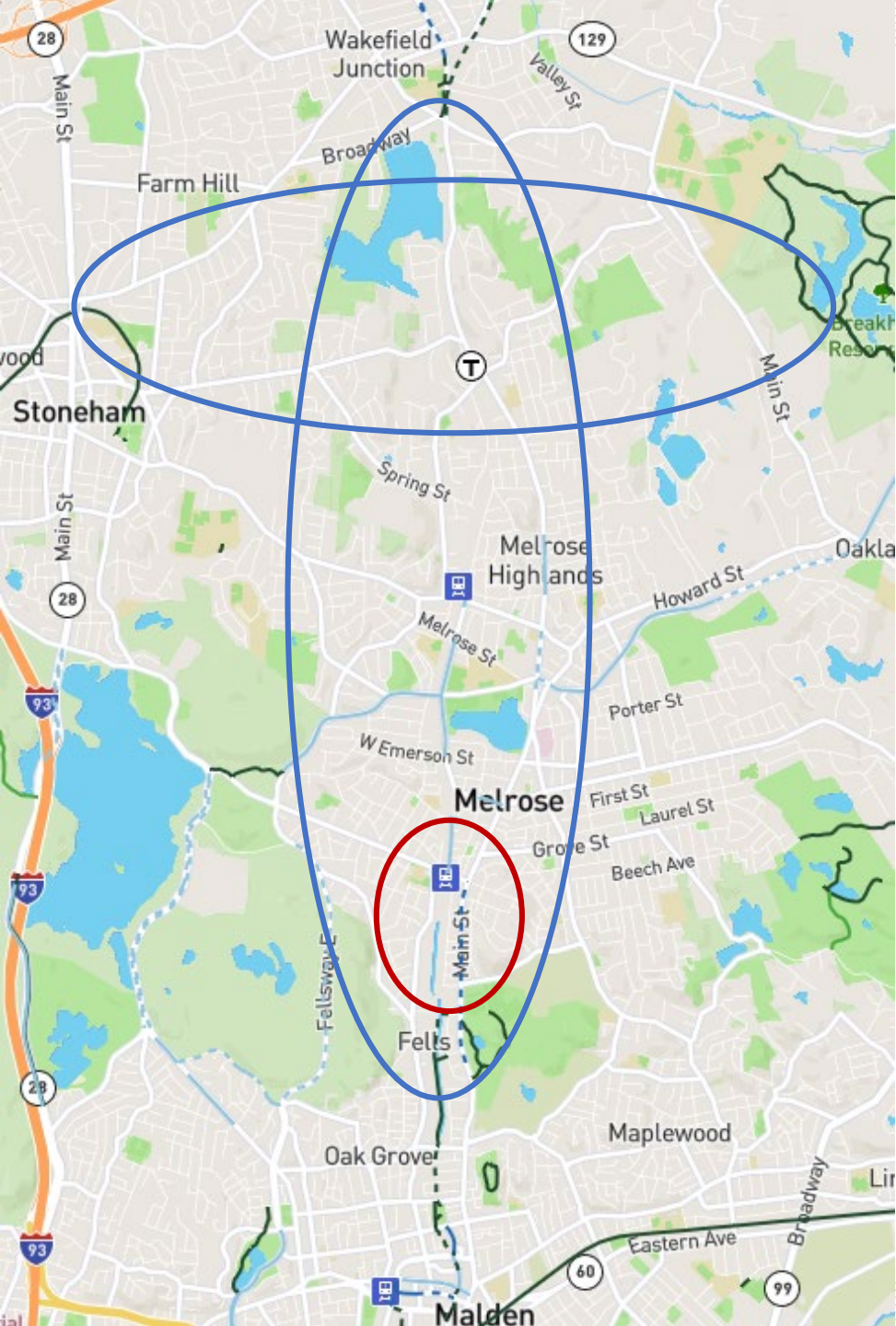


# MAPC Role

---

- Technical assistance to our 101 communities on a variety of planning related topics
- Focus today on regional and statewide programs and projects





# Mystic Highlands Greenway

- Develop a safe and inviting corridor for walking and cycling that connects several town centers, parks, transit, and established regional trail corridors. Included municipalities include Malden, Melrose, Wakefield, Stoneham, and Reading.
- MAPC and state Senator Jason Lewis in partnership with the communities are working toward implementation.
- The Greenway will connect the **Malden River paths, Tri-Community Greenway, Middlesex Fells, Wakefield/Lynnfield Rail Trail, and Lake Quannapowitt.**





# MassDOT programs for street conversions

- Shared Streets and Spaces - \$33 million in grants since 2020
  - Main streets – repurpose streets, plazas and sidewalks, curbs parking
  - Safe streets and paths – Examples follow
  - Better buses – bus lanes, signals, shelters
  - Shared mobility (bike share)
- Complete Streets Program
  - Fund projects after implements policies and develops priority projects

# Boston

- Stages of implementation
  - Pilot
  - Short term
  - Permanent (narrow roadway with new curbs, sidewalks, protected bike lanes)





# Somerville/ Medford

---

Fellsway/Route 28





# Natick and Wayland

Route 30



Before, 2019



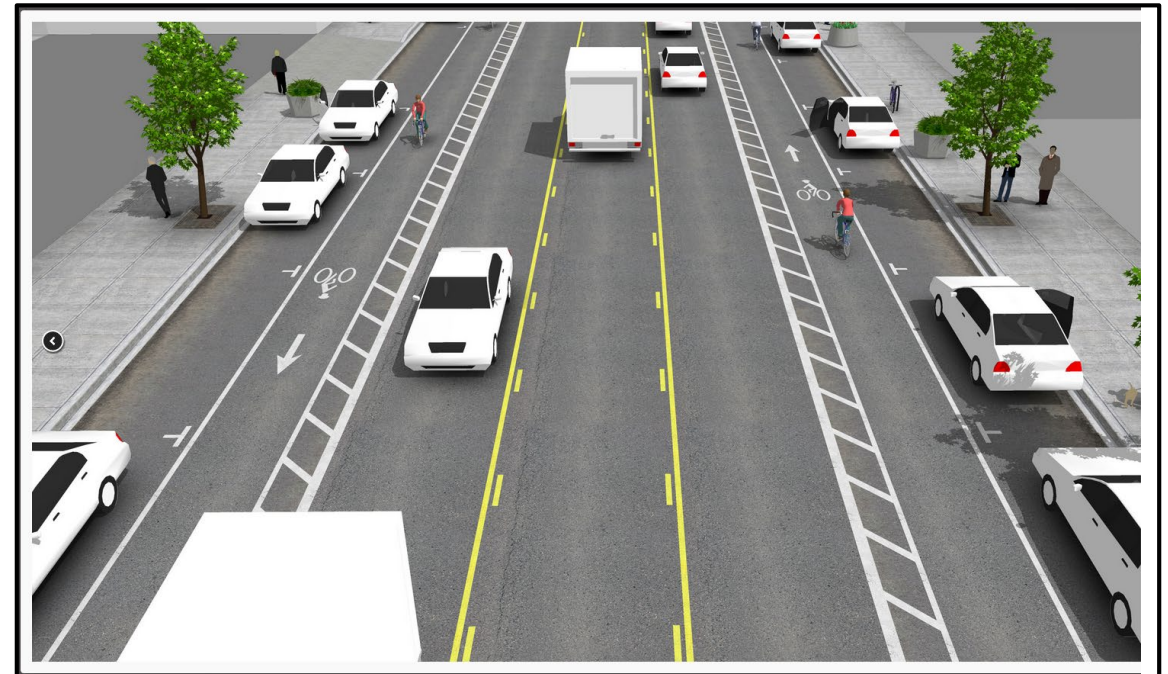
After, 2020





# PILOT PROJECT STEPS

- Install temporary pavement markings to test out new bike lanes
- Conduct survey to gauge project acceptance
- Work with MAPC and stakeholders to identify feasible alternatives – Modify layout as necessary
- Design permanent changes and present to public
- Implement permanent changes and final paving in the fall





# Example Bike Lane







# WHAT IS A SHARROW?



**Sharrows are shared lane markings, indicating that cyclists are permitted to ride within the travel lane. They are often combined with the signage shown.**



# YIELD TRIANGLES AT CROSSWALKS







# WHAT IS A BIKE BOX?





# NOTICE FOR CARS PARKING IN BIKE LANE

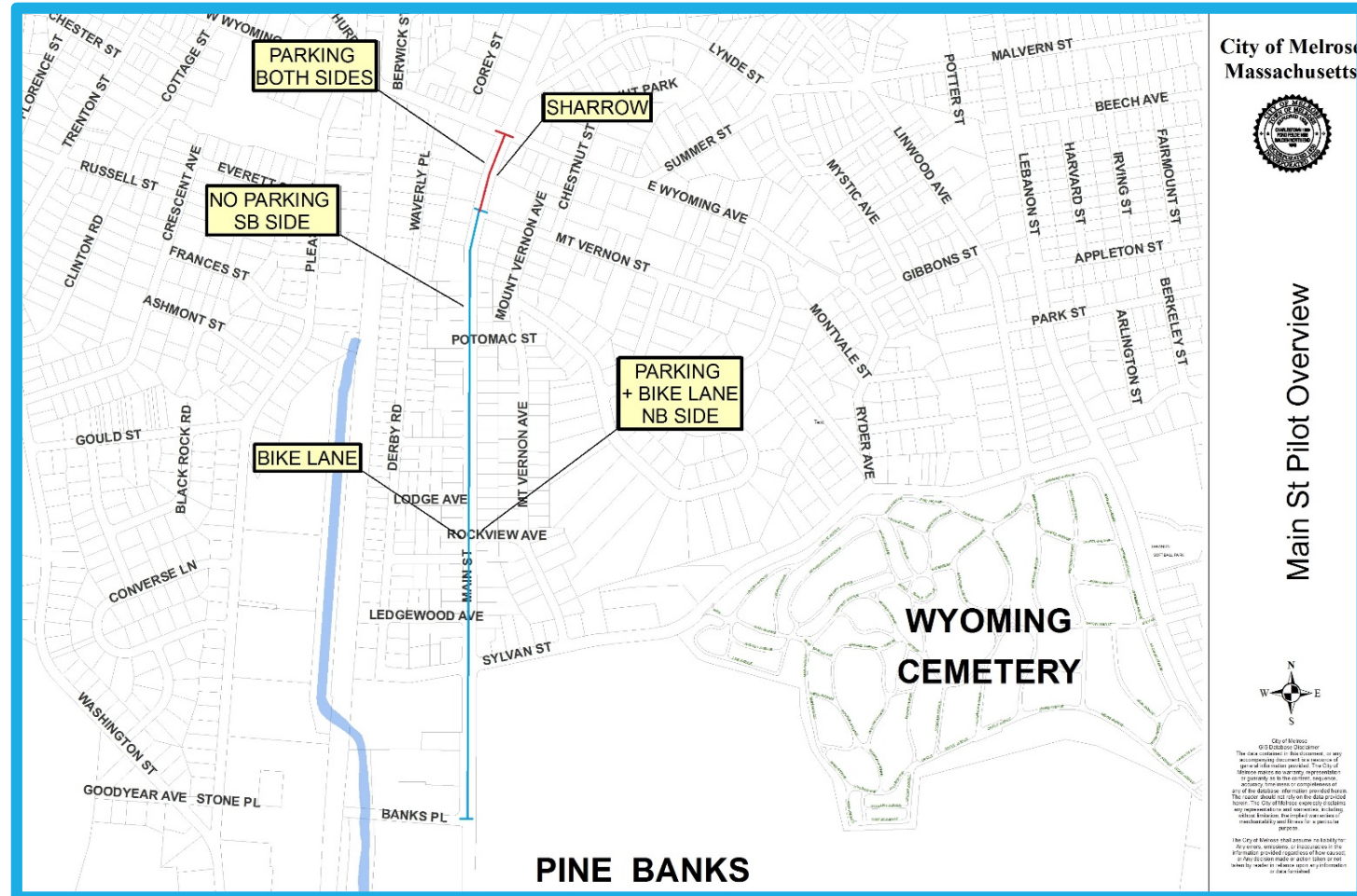
**Whoops! You parked in the bike lane!**





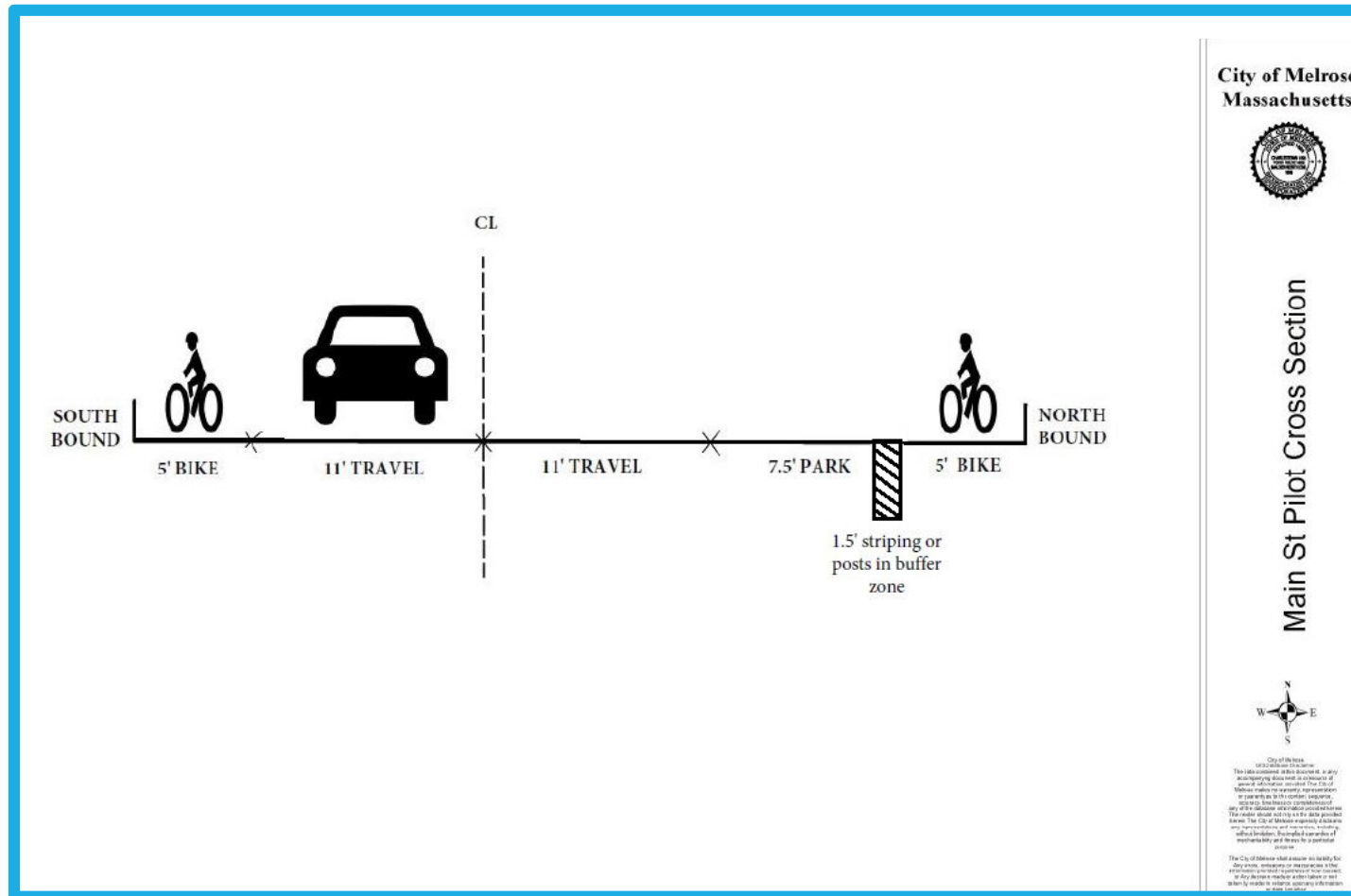


# PROPOSED PROJECT AREA

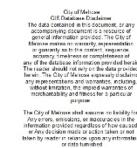




# PROPOSED CROSS SECTION

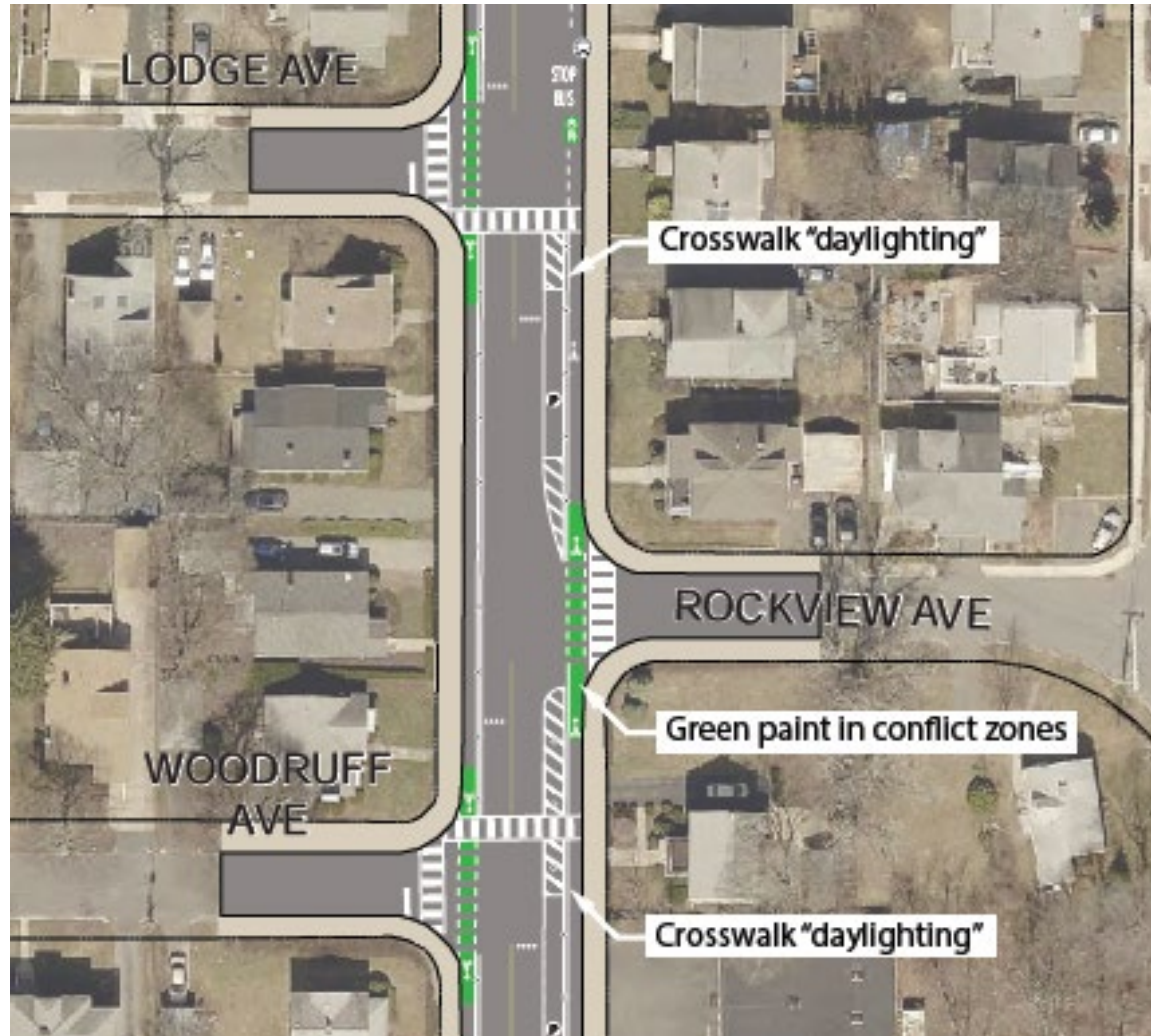








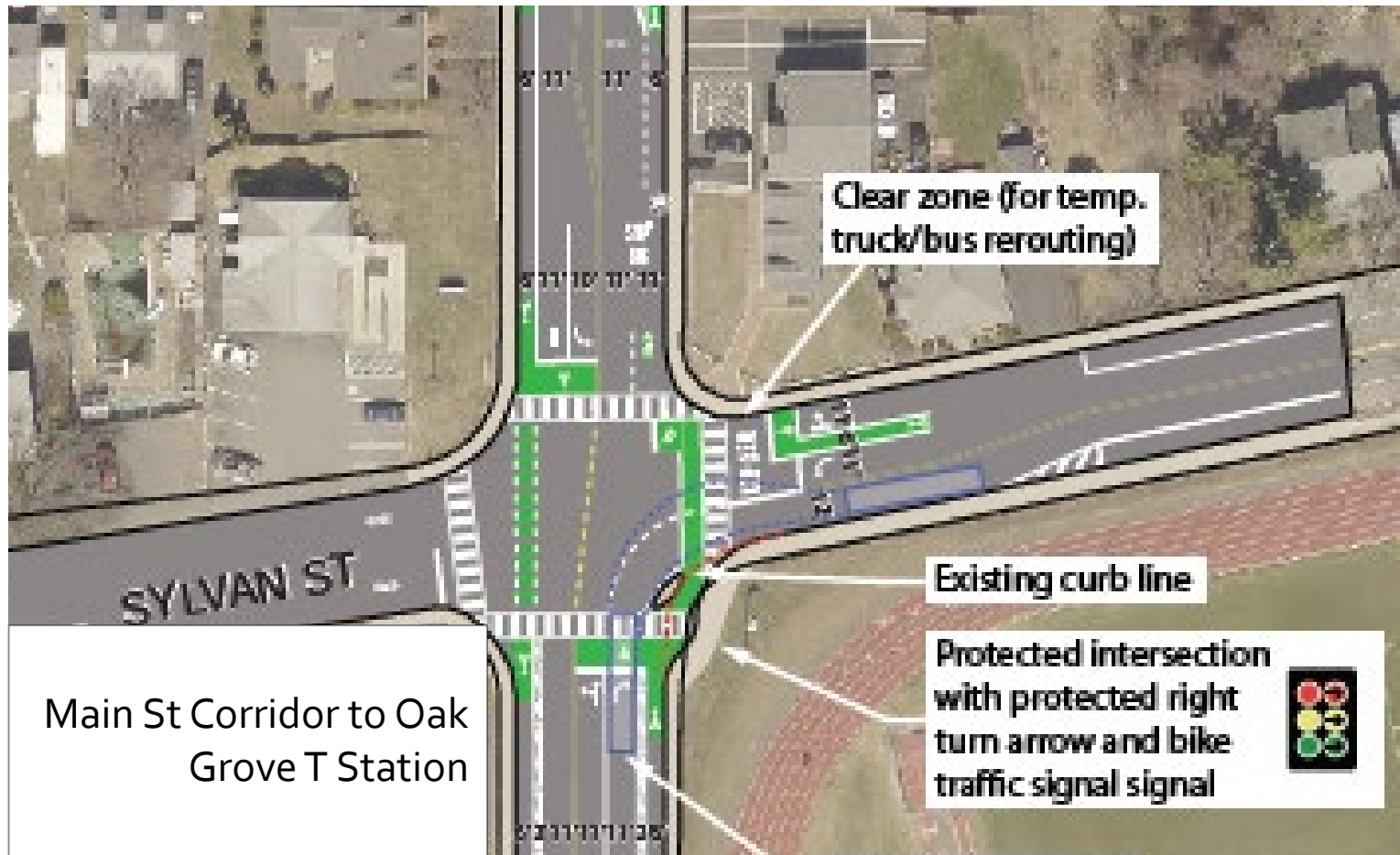
# EXAMPLE IMPROVEMENTS



One of several alternatives being considered – final layout will be determined after the Pilot Program



# EXAMPLE IMPROVEMENTS



One of several alternatives being considered – final layout will be determined after the Pilot Program



# QUESTIONS?

- Where would you like to see crosswalks added?
- Do you have comments on the bike lane design?
- Do you prefer parking on the East side or West side of the street?

